



General Products

WE SIMPLIFY, INNOVATE, ELEVATE

24



CONSUMER UNITS



CIRCUIT PROTECTION



ENCLOSURES



ENCLOSED SWITCHGEAR



INDUSTRIAL PLUGS & SOCKETS



ELECTRIC VEHICLE CHARGING

WWW.GARO.CO.UK

Contents

1 Diamond Range

- Consumer Units
- Garage Boards
- Shower Boards
- Priority & Non Priority Boards
- 6KA MCB & RCBO
- 6KA AFDD
- Isolators, RCCB & SPD
- Accessories
- EV & PME MCU IP40
- LM, Heat Pump & Solar MCU IP65

13 Metal TPN Range

- Metal TPN Boards
- Connection Kits
- Meters & SPD
- 10kA MCB & RCBO (SP)
- 10kA MCB (TP)

18 Circuit Protection

- RCBO
- RCBO 2 Module 2 Pole
- RCBO 1 Module 2 Pole
- RCBO 4 Module 4 Pole
- Test Relay
- Kilowatt Hour Meters
- Modular Contactors
- Surge Protection Devices

27 Enclosures

- Plastic Enclosures IP65

30 Enclosed Switchgear

- AC Safety Switches
- DC Safety Switches
- Meter Box Disconnects
- Meter Box Junction Boxes
- Metal Clad Isolators
- Metal Clad Switch Fuse
- Metal Clad Changeover

37 Industrial Plugs & Sockets

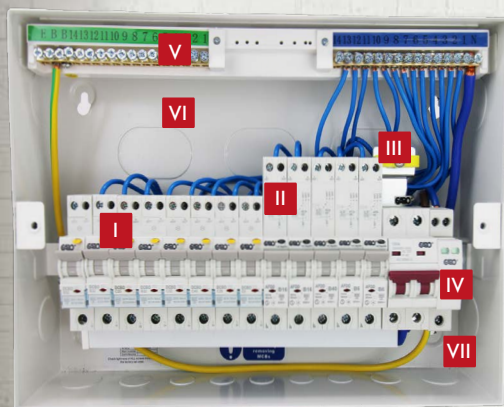
- Quick Finder
- Plugs
- Sockets
- Phase Inverters
- Wall Sockets IP44 & IP67
- Wall Inlet IP44 & IP67
- Connection Outlets (3 Way)
- Panel Sockets IP44 & IP67
- Combination Units & Interlocked Sockets IP44
- Combination Units & Interlocked Sockets IP67
- Combination Sockets Complete with RCCB
- Entertainment Range IP44 & IP67

61 Electric Vehicle Charging

- Entity Pro Single 7.4kW
- Entity Pro Single 22kW
- Entity Pro Dual
- Entity Pro Accessories
- GTB+
- LS4
- 43kW LS4
- ALIO Payment System
- Atle 24kW
- Rapid 60/ 120/180
- EV Charging Cables

Consumer Units and Circuit Protection

- 2 Diamond Consumer Units
- 3 Priority, Non-Priority and Shower Boards
- 4 MCB, RCBO Characteristic B
- 5 MCB, RCBO Characteristic C
- 6 AFDD Characteristic B & C
- 7 Isolator, RCCB, Surge Protection
- 8 Bell Transformer & Accessories
- 9 Metal Consumer Units IP40
- 10 Plastic Consumer Units IP65
- 11 Metal Consumer Units IP65



- I Ultra Compact RCBO
- II Arc Fault Detection Device (AFDD)
- III Main Cable Clamp
- IV Surge Arrestor
- V Earth & Neutral Bar
- VI Large Space for Wiring
- VII Non-Combustible Enclosures



18th Edition
Compliant



Comprehensive
Warranties



Enhanced
Protection

DIAMOND CONSUMER UNITS

CONSUMER UNITS IP41 WITH ISOLATOR & SURGE PROTECTION

Code	Description	Trade Price
GS6S3C	MCU c/w Isolator & Surge 6 module 3 free	£101.16
GS8S5C	MCU c/w Isolator & Surge 8 module 5 free	£105.48
GS10S7C	MCU c/w Isolator & Surge 10 module 7 free	£109.82
GS12S9C	MCU c/w Isolator & Surge 12 module 9 free	£115.90
GS14S11C	MCU c/w Isolator & Surge 14 module 11 free	£120.68
GS16S13C	MCU c/w Isolator & Surge 16 module 13 free	£125.08
GS18S15C	MCU c/w Isolator & Surge 18 module 15 free	£129.01
GS22S19C	MCU c/w Isolator & Surge 22 module 19 free	£139.83
GS32S29C	MCU c/w Isolator & Surge 32 module 29 free	£220.00



GS18S15C

CONSUMER UNITS IP41 WITH ISOLATOR, 2 X RCCB & SURGE PROTECTION (High Integrity)

Code	Description	Trade Price
GS14SRR3-4	MCU Isol,surge,2xRCCB, 14 module, 3+4	£188.80
GS16SRR4-5	MCU Isol,surge,2xRCCB, 16 module, 4+5	£195.10
GS18SRR5-6	MCU Isol,surge,2xRCCB, 18 module, 5+6	£199.16
GS22SRR7-8	MCU Isol,surge,2xRCCB, 22 module, 7+8	£206.88



GS14SRR3-4

CONSUMER UNITS IP41 WITH ISOLATOR

Code	Description	Trade Price
G8S6CD	MCU 100A DP Switch 6 ways free	£61.24
G10S8CD	MCU 100A DP Switch 8 ways free	£64.82
G12S10CD	MCU 100A DP Switch 10 ways free	£69.32



G10S8CD

EMPTY ENCLOSURES

Code	Description	Trade Price
G4-4D	MCU 4 ways free	£41.82
G6-6D	MCU 6 ways free	£46.24
G8-8D	MCU 8 ways free	£49.04
G10-10D	MCU 10 ways free	£56.47



G4-4D

CONSUMER UNITS FOR GARAGE



G4R3216

Code	Description	Trade Price
G4R3216	MCU c/w 40A RCCB 4 module 32 & 16 MCB	£66.85

SMALL DISTRIBUTION BOARDS

Code	Description	Trade Price
G2S40R	MCU 2 Module 40A RCBO	£40.73
G2S50R	MCU 2 Module 50A RCBO	£42.65
G2S63R	MCU 2 Module 63A RCBO	£42.65
GS3S40R	MCU 3 Module 40A RCBO, SPD	£79.92
GS3S50R	MCU 3 Module 50A RCBO, SPD	£81.85
GS3S63R	MCU 3 Module 63A RCBO, SPD	£81.85



GS3S40R

PRIORITY AND NON PRIORITY SHOWER BOARDS



GM8-NPS

Code	Description	Trade Price
GM6-PS	MCU 6 Module 40Amp Shower Priority Board	£162.93
GM10-PS63	MCU 10 Module 63A/40A Shower Priority Board	£263.80
GM8-NPS	MCU 8 Module Shower Non- Priority Board	£242.23
GM14-3NPS	MCU 14 Module 3 Shower Non- Priority Board	£477.87

MCB & RCBO CHARACTERISTIC B



DCBGRB132

Miniature Circuit Breakers Pole 6kA Curve B

Code	Description	Trade Price
DCBGRB106	6A MCB Char B SP 6kA	£2.98
DCBGRB110	10A MCB Char B SP 6kA	£2.98
DCBGRB116	16A MCB Char B SP 6kA	£2.98
DCBGRB120	20A MCB Char B SP 6kA	£2.98
DCBGRB125	25A MCB Char B SP 6kA	£2.98
DCBGRB132	32A MCB Char B SP 6kA	£2.98
DCBGRB140	40A MCB Char B SP 6kA	£3.29
DCBGRB150	50A MCB Char B SP 6kA	£3.29
DCBGRB163	63A MCB Char B SP 6kA	£3.29

RCBO Single Pole 6kA Curve B

Code	Description	Trade Price
DCBOGRB06	6A RCBO Char B 30mA 1P+N 1 Module	£26.25
DCBOGRB10	10A RCBO Char B 30mA 1P+N 1 Module	£26.25
DCBOGRB16	16A RCBO Char B 30mA 1P+N 1 Module	£26.25
DCBOGRB20	20A RCBO Char B 30mA 1P+N 1 Module	£26.25
DCBOGRB25	25A RCBO Char B 30mA 1P+N 1 Module	£26.25
DCBOGRB32	32A RCBO Char B 30mA 1P+N 1 Module	£26.25
DCBOGRB40	40A RCBO Char B 30mA 1P+N 1 Module	£26.25



DCBOGRB32

MCB & RCBO CHARACTERISTIC C

Miniature Circuit Breakers Pole 6kA Curve C

Code	Description	Trade Price
DCBGRC106	6A MCB Char C SP 6kA	£2.98
DCBGRC110	10A MCB Char C SP 6kA	£2.98
DCBGRC116	16A MCB Char C SP 6kA	£2.98
DCBGRC120	20A MCB Char C SP 6kA	£2.98
DCBGRC125	25A MCB Char C SP 6kA	£2.98
DCBGRC132	32A MCB Char C SP 6kA	£2.98
DCBGRC140	40A MCB Char C SP 6kA	£3.29
DCBGRC150	50A MCB Char C SP 6kA	£3.29
DCBGRC163	63A MCB Char C SP 6kA	£3.29



DCBGRC140



DCBOGRC25

RCBO Single Pole 6kA Curve C

Code	Description	Trade Price
DCBOGRC06	6A RCBO Char C 30mA 1P+N 1 Module	£26.25
DCBOGRC10	10A RCBO Char C 30mA 1P+N 1 Module	£26.25
DCBOGRC16	16A RCBO Char C 30mA 1P+N 1 Module	£26.25
DCBOGRC20	20A RCBO Char C 30mA 1P+N 1 Module	£26.25
DCBOGRC25	25A RCBO Char C 30mA 1P+N 1 Module	£26.25
DCBOGRC32	32A RCBO Char C 30mA 1P+N 1 Module	£26.25
DCBOGRC40	40A RCBO Char C 30mA 1P+N 1 Module	£26.25

AFDD CHARACTERISTIC B & C

ARC Fault Detection Single Pole 6kA Curve B

Code	Description	Trade Price
DAFGRB06	Arc Fault Det'n B Type 6A 2P 1 Module	£202.80
DAFGRB10	Arc Fault Det'n B Type 10A 2P 1 Module	£202.80
DAFGRB16	Arc Fault Det'n B Type 16A 2P 1 Module	£202.80
DAFGRB20	Arc Fault Det'n B Type 20A 2P 1 Module	£202.80
DAFGRB25	Arc Fault Det'n B Type 25A 2P 1 Module	£202.80
DAFGRB32	Arc Fault Det'n B Type 32A 2P 1 Module	£202.80
DAFGRB40	Arc Fault Det'n B Type 40A 2P 1 Module	£202.80



DAFGRB40

ARC Fault Detection Single Pole 6kA Curve C

Code	Description	Trade Price
DAFGRC06	Arc Fault Det'n C Type 6A 2P 1 Module	£202.80
DAFGRC10	Arc Fault Det'n C Type 10A 2P 1 Module	£202.80
DAFGRC16	Arc Fault Det'n C Type 16A 2P 1 Module	£202.80
DAFGRC20	Arc Fault Det'n C Type 20A 2P 1 Module	£202.80
DAFGRC25	Arc Fault Det'n C Type 25A 2P 1 Module	£202.80
DAFGRC32	Arc Fault Det'n C Type 32A 2P 1 Module	£202.80
DAFGRC40	Arc Fault Det'n C Type 40A 2P 1 Module	£202.80



DAFGRC40

COMPONENTS



DSV2100

Double Pole Isolator

Code	Description	Trade Price
DSV2100	100A DP Isolator AC-22A	£8.53

Double Pole RCCB

Code	Description	Trade Price
DCCB40-2-03	40A 2 Pole RCD 6kA Type A 30mA	£36.30
DCCB80-2-03	80A 2 Pole RCD 6kA Type A 30mA	£40.35



DCCB80-2-03

Surge Protection Type 2 TNC

Code	Description	Trade Price
DST2-275-2	SPD 2 Pole 1 Module Class 11 275V 40KA	£30.91
DST2-275-4	SPD 4 Pole 4 Mod Class 11 275V 20KA	£98.89
DST2-275-2KIT	SPD 2 Pole 1 Module Class 11 275V 40KA with Cables	£37.44



DST2-275-2

COMPONENTS

Accessories

Code	Description	Trade Price
METALBLANK	1 Mod Metal Blank Consumer Units	£0.86
DCB-PB	Modular MCB Plastic Blank	£1.33
MCU-KIT	Consumer Unit Accessories Kit	£1.33
MB-M-2	100A Busbar Main plus 2 modules	£3.88
MB-M-3	100A Busbar Main plus 3 modules	£4.63
MB-M-4	100A Busbar Main plus 4 modules	£5.31
MB-M-6	100A Busbar Main plus 6 modules	£6.70
MB-M-8	100A Busbar Main plus 8 modules	£8.07
MB-M-10	1100A Busbar Main plus 10 modules	£9.51
SPDCable	SPD Brown & Blue Earth Cable 210mm	£5.71



METALBLANK



DCB-PB



TRAN 8-12-24

Bell Transformer and Chime

Code	Description	Trade Price
TRAN 8-12-24	Transformer 2 Module 230 - 8V, 12V, 24 V 1A	£16.71
BIM85	Door Chime (Double Sound)	£14.72

METAL CONSUMER UNITS IP40

EV Consumer Units

Code	Enclosure	Total Mods	Description	Trade Price
G2EV40R	G2-2	2	MCU 2 Module with 40A RCBO	£42.36
G2EV50R	G2-2	2	MCU 2 Module with 50A RCBO	£44.36
G2EV63R	G2-2	2	MCU 2 Module with 50A RCBO	£44.36
GS4EV40M	G4-4	4	MCU 4 Module, SPD, Isolator & 40A MCB	£82.80
GS4EV40R	G4-4	4	MCU, SPD, 40A RCBO	£95.88
GS6EV40R	G6-6	6	MCU, SPD, Isolator & 40A RCBO	£107.44

PME Consumer Units



G6EV40PME

Code	Description	Trade Price
G6EV40PME	MCU 6 Module, RCBO & PEN fault	£269.52
GS8EV40PME	MCU 8 Module, SPD, RCBO & PEN fault	£330.72

Load Management Boards

Code	Description	Trade Price
GS10EV40PMELM60	MCU 10 Module, SPD, RCBO & PEN LM60	£525.20
GS10EV40PMELM80	MCU 10 Module, SPD, RCBO & PEN LM80	£525.20



GS10EV40PMELM60

Heat Pump Boards



GS10HPB3

Code	Description	Trade Price
GS8HPB1	MCU 8 Module, SPD, ISOL Type B RCCB (1 free)	£239.24
GS10HPB3	MCU 10 Module, SPD, ISOL Type B RCCB (3 free)	£242.88

Solar Boards

Code	Description	Trade Price
GS4SOL	MCU 4 Module, Solar, SPD, Isol, 16A RCBO	£100.25
GS6SOL	MCU 6 Module, Solar, SPD, Isol, 16A RCBO (2 free)	£108.29
GS8SOL	MCU 8 Module Solar, SPD, Isol, 16A RCBO (4 free)	£115.03



GS8SOL

PLASTIC CONSUMER UNITS - IP65

EV Consumer Units

Code	Total Mods	Description	Trade Price
GCS4EV40M	4	PCU 4 Module, SPD, Isolator & 40A MCB	£75.40
GCS4EV40R	4	PCU 4 Module, SPD, 40A RCBO	£144.56
GCS6EV40R	6	PCU 6 Module, SPD, Isolator & 40A RCBO	£162.74

PME Consumer Units



GCS6EV40PME

Code	Description	Trade Price
GC6EV40PME	PCU 6 Module, RCBO & PEN fault	£294.67
GCS8EV40PME	PCU 8 Module, SPD, RCBO & PEN fault	£336.54

Load Management Boards

Code	Description	Trade Price
GCS12EV40PMELM60	PCU 10 Module, SPD, RCBO & PEN LM60	£525.20
GCS12EV40PMELM80	PCU 10 Module, SPD, RCBO & PEN LM80	£525.20



GCS12EV40PMELM60

Heat Pump Boards



GCS8HPB1

Code	Description	Trade Price
GCS8HPB1	PCU 8 Module, SPD, ISOL Type B RCCB (2 free)	£230.80
GCS12HPB3	PCU 10 Module, SPD, ISOL Type B RCCB (5 free)	£239.40

Solar Boards

Code	Description	Trade Price
GCS4SOL	PCU 4 Module, Solar, SPD, Isol, 16A RCBO	£96.40
GCS6SOL	PCU 6 Module, Solar, SPD, Isol, 16A RCBO (2 free)	£104.12
GCS8SOL	PCU 8 Module Solar, SPD, Isol, 16A RCBO (4 free)	£110.60



GCS6SOL

METAL CONSUMER UNITS IP65

Metal Enclosure

Code	Description	Trade Price
GM5-5D	MCU 5 Module, IP65	£53.40



GM5-5D

Metal Consumer Units



GMSEV40M

Code	Description	Trade Price
GMS5EV40M	MCU 5 Module, SPD, Isolator & 40 Amp MCB IP65	£112.00
GMS5EV40R	MCU 5 Module, SPD, Isolator & 40 Amp RCBO IP65	£134.00

Load Management Boards (Entity)

Code	Description	Trade Price
GMS5EV40LM60	MCU 5 Module, SPD, RCBO & PEN LM60	£228.53
GMS5EV40LM80	MCU 5 Module, SPD, RCBO & PEN LM80	£228.53



GMS5EV40LM60

Solar Boards



GMS5SOL

Code	Description	Trade Price
GMS5SOL	MCU 5 Module, SPD, Isolator & 16A MCB (1 Free)	£146.00

*** Available from May 2024**

NEW!



IP65 Aluminium

Inside



Back



- Sleek Design & High Resistance
- Strong, Durable & Discrete
- Outdoors or Indoors Applications
- Easy Installation
- Competively priced
- Great Stock Availability

Metal TPN Range

- 14 Metal TPN Boards & Kits
- 15 Single Pole Characteristic B
- 16 Single Pole Characteristic C
- 17 Triple Pole Characteristic B & C



METAL TPN BOARDS

IP41

Code	Description	Trade Price
DTPN12	12 Way TPN Board 250Amp	£302.35
DTPN18	18 Way TPN Board 250Amp	£340.33
DTPN24	24 Way TPN Board 250Amp	£384.72
DTPN36	36 Way TPN Board 250Amp	£468.57
DTPN48	48 Way TPN Board 250Amp	£552.42



DTPN24



DTPNHEADER

Code	Description	Trade Price
DTPNHEADER	TPN Header Box	£197.60
DTPNCABLE	TPN Cable entry Plate (to be used with header box)	£197.60

TPN KITS

Code	Description	Trade Price
DTPN125KIT	125A Switch Kit for TPN boards	£98.80
DTPN100KIT	100A RCCB 100mA Kit for TPN Board	£124.80
DTPN250KIT	250A Switch Kit for TPN Boards	£343.20



DTPN250KIT



DTPNMETERKIT

Code	Description	Trade Price
DTPNSPKIT	Type 11 SPD kit for TPN Boards (4 pole)	£171.60
DTPNMETERKIT	Multi-meter Kit for TPN board	£780.00

*** Available from June 2024**

SINGLE POLE CHARACTERISTIC B



DCBGSB132

Miniature Circuit Breakers Single Pole 10kA Curve B

Code	Description	Trade Price
DCBGSB106	6A MCB Char B SP 10kA	£4.68
DCBGSB110	10A MCB Char B SP 10kA	£4.68
DCBGSB116	16A MCB Char B SP 10kA	£4.68
DCBGSB120	20A MCB Char B SP 10kA	£4.68
DCBGSB125	25A MCB Char B SP 10kA	£4.68
DCBGSB132	32A MCB Char B SP 10kA	£4.68
DCBGSB140	40A MCB Char B SP 10kA	£4.94
DCBGSB150	50A MCB Char B SP 10kA	£5.41
DCBGSB163	63A MCB Char B SP 10kA	£5.41

RCBO Single Pole 10kA Curve B

Code	Description	Trade Price
DCBOGSB06	6A RCBO Char B SP 10kA	£34.84
DCBOGSB10	10A RCBO Char B SP 10kA	£34.84
DCBOGSB16	16A RCBO Char B SP 10kA	£34.84
DCBOGSB20	20A RCBO Char B SP 10kA	£34.84
DCBOGSB25	25A RCBO Char B SP 10kA	£34.84
DCBOGSB32	32A RCBO Char B SP 10kA	£34.84
DCBOGSB40	40A RCBO Char B SP 10kA	£34.84



DCBOGSB25

*** Available from June 2024**

SINGLE POLE CHARACTERISTIC C

Miniature Circuit Breakers Single Pole 10kA Curve C

Code	Description	Trade Price
DCBGSC106	6A MCB Char C SP 10kA	£4.68
DCBGSC110	10A MCB Char C SP 10kA	£4.68
DCBGSC116	16A MCB Char C SP 10kA	£4.68
DCBGSC120	20A MCB Char C SP 10kA	£4.68
DCBGSC125	25A MCB Char C SP 10kA	£4.68
DCBGSC132	32A MCB Char C SP 10kA	£4.68
DCBGSC140	40A MCB Char C SP 10kA	£4.94
DCBGSC150	50A MCB Char C SP 10kA	£5.41
DCBGSC163	63A MCB Char C SP 10kA	£5.41



DCBGSC132

RCBO Single Pole 10kA Curve C

Code	Description	Trade Price
DCBOGSC06	6A RCBO Char C SP 10kA	£34.84
DCBOGSC10	10A RCBO Char C SP 10kA	£34.84
DCBOGSC16	16A RCBO Char C SP 10kA	£34.84
DCBOGSC20	20A RCBO Char C SP 10kA	£34.84
DCBOGSC25	25A RCBO Char C SP 10kA	£34.84
DCBOGSC32	32A RCBO Char C SP 10kA	£34.84
DCBOGSC40	40A RCBO Char C SP 10kA	£34.84



DCBOGSC25

*** Available from June 2024**

TRIPLE POLE CHARACTERISTIC B & C

Miniature Circuit Breakers Triple Pole 10kA Curve B



DCBGSB320

Code	Description	Trade Price
DCBGSB306	6A MCB Char B TP 10kA	£16.38
DCBGSB310	10A MCB Char B TP 10kA	£16.38
DCBGSB316	16A MCB Char B TP 10kA	£16.38
DCBGSB320	20A MCB Char B TP 10kA	£16.38
DCBGSB325	25A MCB Char B TP 10kA	£16.38
DCBGSB332	32A MCB Char B TP 10kA	£16.38
DCBGSB340	40A MCB Char B TP 10kA	£17.16
DCBGSB350	50A MCB Char B TP 10kA	£19.24
DCBGSB363	63A MCB Char B TP 10kA	£19.24

Miniature Circuit Breakers Triple Pole 10kA Curve C

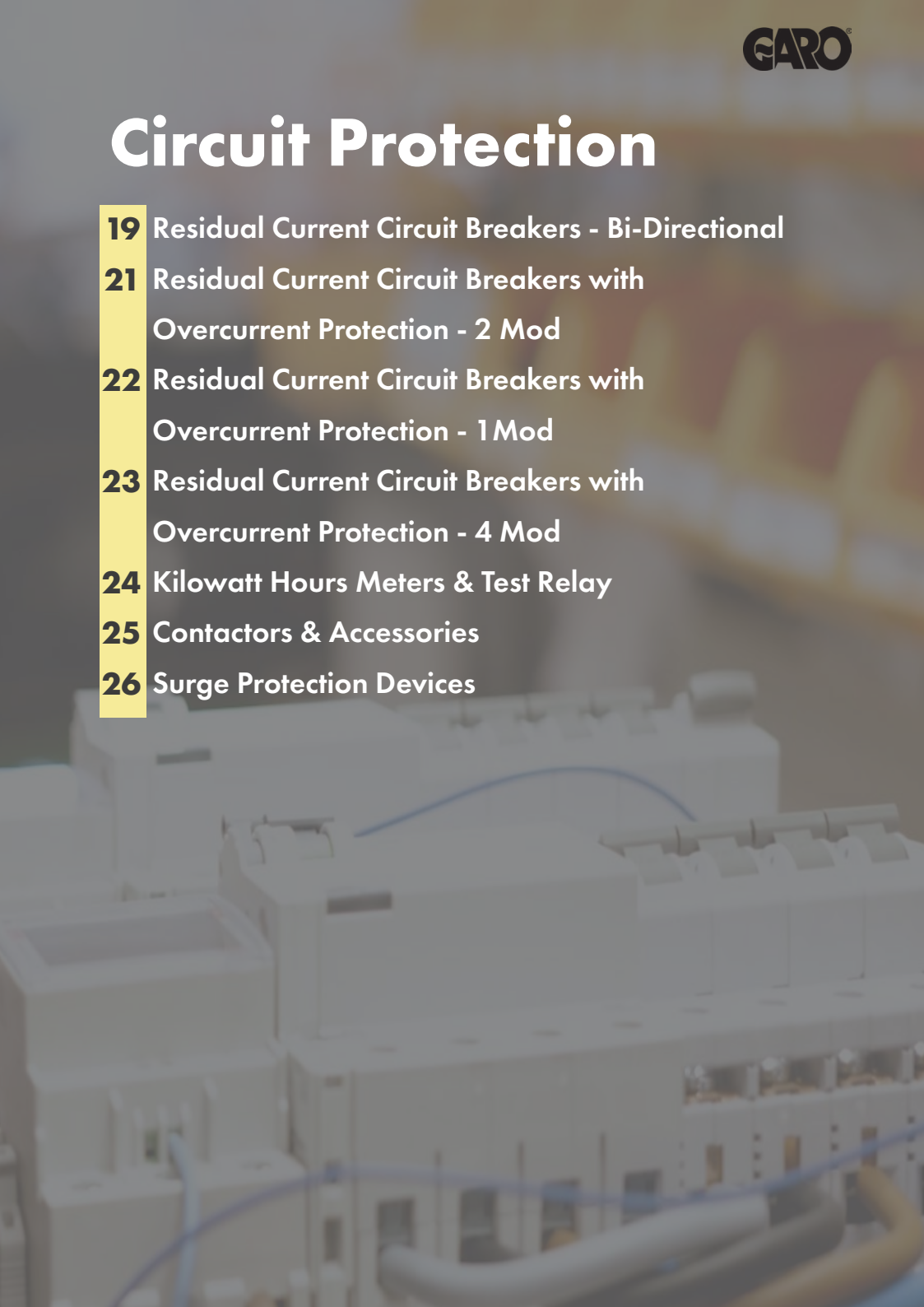
Code	Description	Trade Price
DCBGSC306	6A MCB Char C TP 10kA	£16.38
DCBGSC310	10A MCB Char C TP 10kA	£16.38
DCBGSC316	16A MCB Char C TP 10kA	£16.38
DCBGSC320	20A MCB Char C TP 10kA	£16.38
DCBGSC325	25A MCB Char C TP 10kA	£16.38
DCBGSC332	32A MCB Char C TP 10kA	£16.38
DCBGSC340	40A MCB Char C TP 10kA	£17.16
DCBGSC350	50A MCB Char C TP 10kA	£19.24
DCBGSC363	63A MCB Char C TP 10kA	£19.24



DCBGSC320

*** Available from June 2024**

Circuit Protection

- 19** Residual Current Circuit Breakers - Bi-Directional
 - 21** Residual Current Circuit Breakers with Overcurrent Protection - 2 Mod
 - 22** Residual Current Circuit Breakers with Overcurrent Protection - 1 Mod
 - 23** Residual Current Circuit Breakers with Overcurrent Protection - 4 Mod
 - 24** Kilowatt Hours Meters & Test Relay
 - 25** Contactors & Accessories
 - 26** Surge Protection Devices
- 

RESIDUAL CURRENT CIRCUIT BREAKERS - Bi-Directional-6kA

TYPE A - 2 Pole

2 Pole - 30 mA

Code	Description	Trade Price
DCCB40-2-03	40A 2 Pole RCCB Type A 30mA	£36.30
DCCB63-2-03	63A 2 Pole RCCB Type A 30mA	£39.50
DCCB80-2-03	80A 2 Pole RCCB Type A 30mA	£40.35
DCCB100-2-03	100A 2 Pole RCCB Type A 30mA	£50.24



DCCB80-2-03

2 Pole - 100mA

Code	Description	Trade Price
DCCB63-2-1	63A 2 Pole RCCB Type A 100mA	£43.25

2 Pole - 100mA - Time Delayed

Code	Description	Trade Price
DCCB63-2-1S	63A 2 Pole RCCB DELAY Type A 100mA	£81.75
DCCB80-2-1S	80A 2 Pole RCCB DELAY Type A 100mA	£81.75
DCCB100-2-1S	100A 2 Pole RCCB DELAY Type A 100mA	£88.86



DCCB80-2-1S

2 Pole - 300mA - Time Delayed

Code	Description	Trade Price
DCCB63-2-3S	63A 2 Pole RCCB DELAY Type A 300mA	£81.75
DCCB80-2-3S	80A 2 Pole RCCB DELAY Type A 300mA	£81.75
DCCB100-2-3S	100A 2 Pole RCCB DELAY Type A 300mA	£88.86

TYPE B - 2 Pole - 3 Module

2 Pole

Code	Description	Trade Price
DCCB63-2-03B	63A 2 Pole RCCB Type B 30mA	£177.01



DCCB63-2-03B

RESIDUAL CURRENT CIRCUIT BREAKERS - Bi-Directional-6kA

TYPE A - 4 Pole

4 Pole - 30mA

Code	Description	Trade Price
DCCB40-4-03	40A 4 Pole RCCB Type A 30mA	£56.99
DCCB63-4-03	63A 4 Pole RCCB Type A 30mA	£59.08
DCCB80-4-03	80A 4 Pole RCCB Type A 30mA	£63.25
DCCB100-4-03	100A 4 Pole RCCB Type A 30mA	£71.59



4 Pole - 100mA

Code	Description	Trade Price
DCCB63-4-1	63A 4 Pole RCCB Type A 100mA	£59.05

4 Pole - 100mA - Time Delayed

Code	Description	Trade Price
DCCB63-4-1S	63A 4 Pole RCCB DELAY Type A 100mA	£95.97
DCCB80-4-1S	80A 4 Pole RCCB DELAY Type A 100mA	£95.97
DCCB100-4-1S	100A 4 Pole RCCB DELAY Type A 100mA	£103.07



4 Pole - 300mA - Time Delayed

Code	Description	Trade Price
DCCB63-4-3S	63A 4 Pole RCCB DELAY Type A 300mA	£95.97
DCCB80-4-3S	80A 4 Pole RCCB DELAY Type A 300mA	£95.97
DCCB100-4-3S	100A 4 Pole RCCB DELAY Type A 300mA	£103.07

TYPE B - 4 Pole - 4 Module

4 Pole

Code	Description	Trade Price
DCCB63-4-03B	63A 4 Pole RCCB Type B 30mA	£226.16



RESIDUAL CURRENT CIRCUIT BREAKERS TYPE A - 6kA With Overcurrent Protection 2 MOD - 2 Pole -Bi-Directional

2 Pole - Char B - 30mA

Code	Description	Trade Price
DCBO2MB06	6A RCBO 2 Pole 2 Module 30mA Char B	£35.36
DCBO2MB10	10A RCBO 2 Pole 2 Module 30mA Char B	£35.36
DCBO2MB16	16A RCBO 2 Pole 2 Module 30mA Char B	£35.36
DCBO2MB20	20A RCBO 2 Pole 2 Module 30mA Char B	£35.36
DCBO2MB25	25A RCBO 2 Pole 2 Module 30mA Char B	£35.36
DCBO2MB32	32A RCBO 2 Pole 2 Module 30mA Char B	£35.36
DCBO2MB40	40A RCBO 2 Pole 2 Module 30mA Char B	£35.36
DCBO2MB50	50A RCBO 2 Pole 2 Module 30mA Char B	£39.52
DCBO2MB63	63A RCBO 2 Pole 2 Module 30mA Char B	£39.52



DCBO2MB40

2 Pole - Char C - 30mA

Code	Description	Trade Price
DCBO2MC06	6A RCBO 2 Pole 2 Module 30mA Char C	£35.36
DCBO2MC10	10A RCBO 2 Pole 2 Module 30mA Char C	£35.36
DCBO2MC16	16A RCBO 2 Pole 2 Module 30mA Char C	£35.36
DCBO2MC20	20A RCBO 2 Pole 2 Module 30mA Char C	£35.36
DCBO2MC25	25A RCBO 2 Pole 2 Module 30mA Char C	£35.36
DCBO2MC32	32A RCBO 2 Pole 2 Module 30mA Char C	£35.36
DCBO2MC40	40A RCBO 2 Pole 2 Module 30mA Char C	£35.36
DCBO2MC50	50A RCBO 2 Pole 2 Module 30mA Char C	£39.52
DCBO2MC63	63A RCBO 2 Pole 2 Module 30mA Char C	£39.52



DCBO2MC40

RESIDUAL CURRENT CIRCUIT BREAKERS TYPE A - 6kA with Overcurrent Protection 1 MOD - 2 Pole - Bi-Directional

2 Pole - Char B - 30mA

Code	Description	Trade Price
DCBO1MB06	6A RCBO 2 Pole 1 Module 30mA Char B	£37.89
DCBO1MB10	10A RCBO 2 Pole 1 Module 30mA Char B	£37.89
DCBO1MB16	16A RCBO 2 Pole 1 Module 30mA Char B	£37.89
DCBO1MB20	20A RCBO 2 Pole 1 Module- 30mA Char B	£37.89
DCBO1MB25	25A RCBO 2 Pole 1 Module 30mA Char B	£37.89
DCBO1MB32	32A RCBO 2 Pole 1 Module 30mA Char B	£37.89



DCBO1MB20



DCBO1MC20

2 Pole - Char C - 30mA

Code	Description	Trade Price
DCBO1MC06	6A RCBO 2 Pole 1 Module 30mA Char C	£37.89
DCBO1MC10	10A RCBO 2 Pole 1 Module 30mA Char C	£37.89
DCBO1MC16	16A RCBO 2 Pole 1 Module 30mA Char C	£37.89
DCBO1MC20	20A RCBO 2 Pole 1 Module 30mA Char C	£37.89
DCBO1MC25	25A RCBO 2 Pole 1 Module 30mA Char C	£37.89
DCBO1MC32	32A RCBO 2 Pole 1 Module 30mA Char C	£37.89

RESIDUAL CURRENT CIRCUIT BREAKERS TYPE A- 6kA with Overcurrent Protection - 4 MOD - 4 Pole -Bi-Directional

Characteristic B

4 Pole - 30mA

Code	Description	Trade Price
RCBOGSB06	6A RCBO 3P+N 30mA Char B	£134.19
RCBOGSB10	10A RCBO 3P+N 30mA Char B	£134.19
RCBOGSB16	16A RCBO 3P+N 30mA Char B	£134.19
RCBOGSB20	20A RCBO 3P+N 30mA Char B	£134.19
RCBOGSB25	25A RCBO 3P+N 30mA Char B	£134.19
RCBOGSB32	32A RCBO3P+N 30mA Char B	£134.19



RCBOGSB16

Characteristic C

4 Pole - 30mA

Code	Description	Trade Price
RCBOGSC06	6A RCBO 3P+N 30mA Char B	£134.19
RCBOGSC10	10A RCBO 3P+N 30mA Char B	£134.19
RCBOGSC16	16A RCBO 3P+N 30mA Char B	£134.19
RCBOGSC20	20A RCBO 3P+N 30mA Char B	£134.19
RCBOGSC25	25A RCBO 3P+N 30mA Char B	£134.19
RCBOGSC32	32A RCBO3P+N 30mA Char B	£134.19



RCBOGSC16

KILOWATT HOUR METERS

Din rail mounted energy meters with Pulse Outlets.

Code	Description	Measures	Trade Price
GNM1D	Garó 1 Mod SP Meter 45A Pulse MID	KWH, KW,V&A	£69.27
GNM1D-RS485	Garó 1 Mod SP Meter 45A Modbus MID	KWH, KW,V&A	£79.27
GNM1D-100-RS485	Garó 2 Mod SP Meter 100A Bi-directional Modbus	KWH, KW,V&A	£149.49
GNM3D	Garó 4 Mod TP 65A Meter Pulse MID	KWH, KW,V&A	£158.53
GNM3D-RS485	Garó 4 Mod TP 65A Meter Modbus MID	KWH, KW,V&A	£200.86
GNM3TD	Garó 4 Mod MFM Dual RJ11 Input Pulse + Modbus	KWH,KW,V&A	£312.04
GNT160	160A TP CT RJ11 150 cm Lead		£89.63
GNT250	250A TP CT RJ11 150 cm Lead		£104.72
GNT630	630A TP CT RJ11 150 cm Lead		£121.63
GNM3T-RS485	Garó 4 Mod MFM 5A CT Input Pulse + Modbus	KWH, KW,V&A	£243.13
GDT36-300A	300 / 5A Split Core CT	Set of 3	£503.69
GDT36-600A	600 / 5A Split Core CT	Set of 3	£539.97

EMERGENCY LIGHTS TEST RELAY

Code	Description	Trade Price
DCTU	Emergency Light Test Relay - Din Rail mounting	£56.62



DCTU

CONTACTORS - SILENT COIL

Modular contactors for din rail mounting

Code	Description	Type	Trade Price
GK20-1NO1NC	20A 2P 1 Mod 1NC/1NO Modular Contactor	AC	£20.61
GK20-2NO	20A 2P 1 Mod NO Modular Contactor	AC	£28.95
GK20-2NC	20A 2P 1 Mod NC Modular Contactor	AC	£33.73
GK24-4NO	24A 4P 2 Mod NO Modular Contactor	AC-DC	£34.74
GK24-4NC	24A 4P 2 Mod NC Modular Contactor	AC-DC	£39.60
GK32-2NO	32A 2P 1 Mod NO Modular Contactor	AC-DC	£40.09
GK32-4NO	32A 4P 2 Mod NO Modular Contactor	AC-DC	£39.17
GK40-1NO	40A 1P 1 Mod NO Modular Contactor	AC-DC	£52.20
GK40-4NO	40A 4P 3 Mod NO Modular Contactor	AC-DC	£82.96
GK40-2NO2NC	40A 4P 3 Mod 2NO/2NC Modular	AC-DC	£112.07
GK63-4NO	63A 4P 3 Mod NO Modular Contactor	AC-DC	£109.17



GK24-4NC



GK40-4NO

Accessories

Code	Description	Trade Price
GKD	Distance Piece, 12gm, temperatures <40°C	£3.89
GKN11	Auxiliary Contacts	£19.28



GKN11

SURGE PROTECTION DEVICES

CLASS 1 SURGE PROTECTION DEVICES

Code	Description	Trade Price
GPTT1-300-1-1-LH	Type 1 & 11 Surge Arrestor 2p TT/TNC	£213.20
GPTT1-300-3+0LHR	Type 1 & 11 Surge Arrestor 3p Relay	£281.52
GPTT1-300-4+0LHR	Type 1 & 11 Surge Arrestor 4p Relay	£365.28

Category IEC-EN : Class 1 - Type 1
 Location of use : Main distribution board
 Network: TNC-S
 In (8-20) : 25kA per pole
 I_{max} (8-20) : 25kA per pole
 Standard : IEC61643-1



GPTT1-300-4+0LHR

CLASS 11 SURGE PROTECTION DEVICES



GPTT2-300-2-0

Code	Description	Trade Price
GPTT2-300-2-0	SPD 2 Pole Class II	£66.87
GPTT2-300-2-0-R	SPD 2 Pole Class II + relay	£85.62
GPTT2-300-4-0	SPD 4 Pole Class II	£133.74
GPTT2-300-4-0-R	SPD 4 Pole Class II + relay	£164.52
GPT275plug	GPT275 Module	£38.99

Category IEC-EN : Class 11 - Type 11
 Location of use : Main - Sub distribution board
 Network: TNC-S
 In (8-20) : 5kA per pole
 I_{max} (8-20) : 20kA per pole
 Standard : IEC61643-1

ENCLOSURES

29 IP65 Plastic Enclosures



- Our range of distribution enclosures come with transparent reversible doors which can be sealed.
- They are made from halogen free long-lasting plastic material and are equipped with dust caps, for wall mounting screws, and 1-4 quick locking secured screws.
- Enclosures have supports for fixing mounting plates. Cable entries are metric.



GCUT TECHNICAL DATA

Degree of protection	IP65
650° C	
Resistance to impact	IK08
70° C	
Auto-extinguishing degree	HB (UL94)

According to 2006-95-CE directive and EN 60439-1

PLASTIC ENCLOSURES IP65

Code	Description	Trade Price
CDN4G	1 x 3 Modules Enclosure H 174 W 84 D 111	£16.98
GCUT4	1 x 4 Modules DIN Rails H 231 W 166 D 113	£26.99
GCUT6	1 x 6 Modules DIN Rails H 231 W 202 D 113	£28.53
GCUT8	1 x 8 Modules DIN Rails H 231 W 238 D 118	£34.70
GCUT112	1 x 12 Modules DIN Rails H 246 W 310 D 148	£39.44
GCUT118	1 x 18 Modules DIN Rails H 246 W 418 D 148	£65.90
GCUT224	2 x 12 (24) Modules DIN Rails H 436 W 310 D 148	£69.97
GCUT236	2 x 18 (36) Modules DIN Rails H 436 W 418 D 148	£109.69
GCUT336	3 x 12 (36) Modules DIN Rails H 310 W 586 D 148	£104.51
GCUT354	3 X 18 (54) Modules DIN Rails H 418 W 586 D 148	£158.30
	** DIN Rails can be mounted at two different heights	
GCUT N - E	N + E Bar for GCUT 112 - GCUT 354 H 418 W 586 D 148	£20.65
GCUTKL	Key Lock for GCUT Enclosures	£25.40



GCUT336



GCUT6



GCUT112

Enclosed Switchgear

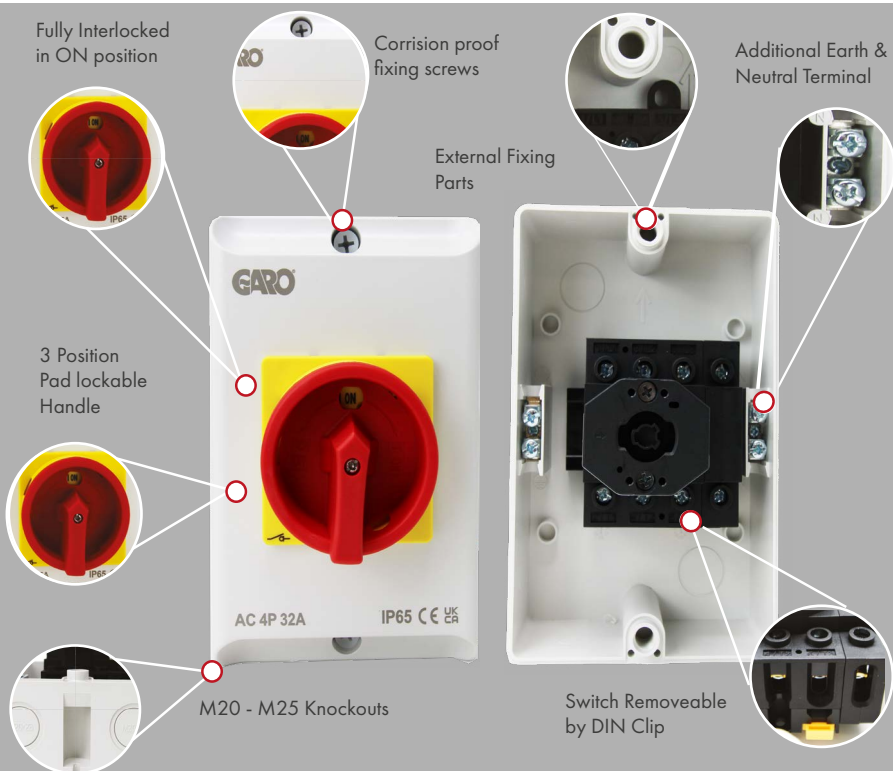
- 31 AC Safety Switches
- 32 Solar DC Safety Switches
- 33 Meter Box Disconnects & Junction Boxes
- 34 IP55 Enclosed Isolator Switches
- 35 IP55 Enclosed Fuse Switches
- 36 Enclosed Changeover Switches



SAFETY SWITCHES ENCLOSED - AC - IP65

AC Polycarbonate Safety Switches

Code	Description	Dimensions	Trade Price
SIAC420IP65	Safety Isolator AC20 Amp 4pole IP65	H 125 W 100 D 85	£24.96
SIAC425IP65	Safety Isolator AC 25Amp 4pole IP65	H 125 W 100 D 85	£26.00
SIAC432IP65C	Safety Isolator AC 32Amp 4pole IP65 Compact	H 125 W 100 D 85	£27.04
SIAC432IP65	Safety Isolator AC 32Amp 4pole IP65	H 172 W 114 D 102	£29.12
SIAC440IP65	Safety Isolator AC 40Amp 4pole IP65	H 172 W 114 D 102	£35.36
SIAC463IP65	Safety Isolator AC 63Amp 4pole IP65	H 172 W 114 D 102	£37.44
SIAC480IP65	Safety Isolator AC 80Amp 4pole IP65	H 238 W 156 D 120	£60.32
SIAC4100IP65	Safety Isolator AC 100Amp 4pole IP65	H 238 W 156 D 120	£70.72



Key Features

- 4 Pole Safety Switch
- 400 Volts
- 5.5 kW - 37 kW AC 23
- Available from 20 to 100 Amps
- 3 Frame sizes
- IP65
- Installer Friendly
- Fully Interlocked
- 3 Position Pad lockable (OFF)

SOLAR SAFETY SWITCHES ENCLOSED - DC - IP65

DC Polycarbonate Safety Switches

Code	Description	Dimensions	Trade Price
SIDC416IP65	Safety Isolator DC 16 Amp 4pole	H 96 W 65 D 180	£33.28
SIDC432IP65	Safety Isolator DC 32 Amp 4pole	H 96 W 65 D 180	£37.44



Key Features

- 4 Pole Safety Switch
- Voltage 1500V DC
- Available in 16A and 32A
- Dual or Single String
- IP65
- Installer Friendly
- Lockable and Interlocked

METER BOX DISCONNECTS

Code	Description	Trade Price
GP2100M	100A 2 Pole meter Disconnect Enclosed	£16.45
GPS2100M	100A 2 Pole meter Disconnect Enclosed c/w Surge	£35.10
GP4100M	100A 4 Pole meter Disconnect Enclosed	£29.96



GP2100M



GP4100M



GPS2100M

METER BOX JUNCTION BOXES

Code	Description	Trade Price
DNO5P	100 Amp 5 Pole Connector Phase Brown	£7.34
DNO5N	100 Amp 5 Pole Connector Neutral Blue	£7.34
DNO5E	100 Amp 5 Pole Connector Earth Green	£7.34
DNO5B	100 Amp 5 Pole Connector Phase Black	£7.34
DNO5G	100 Amp 5 Pole Connector Phase Grey	£7.34



DNO5P

DNO5E

DNO5B

DNO5N

DNO5G

ISOLATOR SWITCHES ENCLOSED - METAL - IP55

Metalclad Isolator Switches - 4 Pole

Code	Description	Trade Price
GSW463IP55M	63A 4P Metalclad Isolator IP55, H300 W200 D150	£215.35
GSW4125IP55M	125A 4P Metalclad Isolator IP55, H400 W300 D200	£354.45
GSW4200IP55M	200A 4P Metalclad Isolator IP55, H400 W300 D200	£455.86
GSW4400IP55M	400A 4P Metalclad Isolator IP55, H600 W500 D250	£823.08



GSW4125IP55M



GSI463

Code	Description	Trade Price
GSI432	32A 4P Metal Clad Isolator IP55, H400 W300 D200	£149.24
GSI463	63A 4P Metal Clad Isolator, H400 W300 D200	£204.14
GSI4100	100A 4P Metal Clad Isolator, H400 W300 D200	£246.96

*** New Range Available from May 2024**

FUSE SWITCHES ENCLOSED - BS TYPE - IP55

Metalclad Fuse Switches - 3 Pole

Code	Description	Trade Price
GFS3631P55MBS	63A 3P Metalclad Isolator IP55, H300 W200 D150	£370.28
GFS31251P55MBS	125A 3P Metalclad Isolator IP55, H400 W300 D200	£471.72
GFS32001P55MBS	200A 3P Metalclad Isolator IP55, H400 W300 D200	£966.01
GFS34001P55MBS	400A 3P Metalclad Isolator IP55, H600 W500 D250	£1,215.51



GSF31251P55M



GSF3100N

Code	Description	Trade Price
GSF332N	32A 3P Metalclad Fuse Switch IP55 BS 88, H400 W300 D200	£167.00
GSF363N	63A 3P Metalclad Fuse Switch IP55 BS 88, H400 W300 D200	£261.18
GSF3100N	100A 3P Metalclad Fuse Switch IP55 BS 88, H400 W300 D200	£316.24

*** New Range Available from May 2024**

CHANGEOVER SWITCHES ENCLOSED - Metal - IP55

Metalclad Changeover - 4 Pole

Code	Description	Dimensions	Trade Price
GCO4125IP55M	125A 4P Changeover IP55	H 500 W 400 D 250	£1,052.17
GCO4160IP55M	160A 4P Changeover IP55	H 500 W 400 D 250	£1,123.66
GCO4200IP55M	200A 4P Changeover IP55 500x400x250	H 500 W 400 D 250	£1,293.82
GCO4250IP55M	250A 4P Changeover IP55 500x400x250	H 500 W 400 D 250	£1,449.13
GCO4400IP55M	400A 4P Changeover IP55 500x400x250	H 500 W 400 D 250	£1,638.07



GCO4200IP55M

Industrial Plugs & Sockets

- 39** Quick Finder
- 41** Plugs
- 42** Sockets
- 43** Phase Inverter
- 44** Sockets & Inlets - Wall Mounting
- 49** Connection Outlets - 3 Way
- 50** Panel Mounting Outlets & Inlets
- 54** Combination Units
- 54** Interlocked Socket Outlets
- 56** Interlocked Combination Units
- 59** Entertainment Black Plugs & Sockets



Wall Inlets & Outlets

*Interlocked
Sockets*





Plugs

Sockets



Combination Units



Entertainment Range



Connection Outlets

FAST FINDER IP44

PLUGS - IP44

Code	Poles	Description	Colour Code	Package Size	Trade Price
P216-4S	2p + E	16A 3PIN 100-130V PLUG	4	10	£2.80
P216-6S	2p + E	16A 3PIN 200-250V PLUG	6	10	£2.80
P232-4S	2p + E	32A 3PIN 100-130V PLUG	4	10	£7.75
P232-6S	2p + E	32A 3PIN 200-250V PLUG	6	10	£7.75
P416-6S	3p + N + E	16A 5PIN 200-415V PLUG	6	10	£5.20
P432-6S	3p + N + E	32A 5PIN 200-415V PLUG	4	10	£7.49

SOCKETS - IP44

Code	Poles	Description	Colour Code	Package Size	Trade Price
S216-4S	2p + E	16A 3PIN 100-130V COUPLER	4	10	£4.66
S216-6S	2p + E	16A 3PIN 200-250V COUPLER	6	10	£4.75
S232-4S	2p + E	32A 3PIN 100-130V COUPLER	4	10	£10.33
S232-6S	2p + E	32A 3PIN 200-250V COUPLER	6	10	£9.05
S416-6S	3p + N + E	16A 5PIN 200-415V COUPLER	6	10	£7.49
S432-6S	3p + N + E	32A 5PIN 200-415V COUPLER	6	10	£12.42

WALL SOCKETS - IP44

Code	Poles	Description	Colour Code	Package Size	Trade Price
UI216-4S-RU	2p + E	16A 3PIN 100-130V WALL SOCKET	4	10	£7.47
UI216-6S-RU	2p + E	16A 3PIN 200-250V WALL SOCKET	6	10	£7.47
UI232-4S-RU	2p + E	32A 3PIN 100-130V WALL SOCKET	4	10	£9.05
UI232-6S-RU	2p + E	32A 3PIN 200-250V WALL SOCKET	6	10	£12.29
UI416-6S-RU	3p + N + E	16A 5PIN 230-400V WALL SOCKET	6	10	£9.84
UI432-6S-RU	3p + N + E	32A 5PIN 230-400V WALL SOCKET	6	10	£12.92



UI232-6S-RU



S232-4S



P432-6S

FAST FINDER IP67

PLUGS - IP67

Code	Poles	Description	Colour Code	Package Size	Trade Price
PV216-4S	2p + E	16A 3PIN 100-130V PLUG IP67	4	10	£7.76
PV216-6S	2p + E	16A 3PIN 200-250V PLUG IP67	6	10	£7.17
PV232-4S	2p + E	32A 3PIN 100-130V PLUG IP67	4	10	£13.05
PV232-6S	2p + E	32A 3PIN 200-250V PLUG IP67	6	10	£11.51
PV416-6S	3p + N + E	16A 5PIN 200-415V PLUG IP67	6	2	£9.51
PV432-6S	3p + N + E	32A 5PIN 200-415V PLUG IP67	6	2	£11.64

SOCKETS - IP67

Code	Poles	Description	Colour Code	Package Size	Trade Price
SV216-4S	2p + E	16A 3PIN 100-130V COUPLER IP67	4	10	£9.74
SV216-6S	2p + E	16A 3PIN 200-250V COUPLER IP67	6	10	£9.74
SV232-4S	2p + E	32A 3PIN 100-130V COUPLER IP67	4	10	£16.94
SV232-6S	2p + E	32A 3PIN 200-250V COUPLER IP67	6	10	£11.89
SV416-6S	3p + N + E	16A 5PIN 200-415V COUPLER IP67	6	10	£12.73
SV432-6S	3p + N + E	32A 5PIN 200-415V COUPLER IP67	6	10	£15.54

WALL SOCKETS - IP67

Code	Poles	Description	Colour Code	Package Size	Trade Price
UIV216-4S-RU	2p + E	16A 3PIN 100-130V COUPLER IP67	4	5	£15.07
UIV216-6S-RU	2p + E	16A 3PIN 200-250V COUPLER IP67	6	5	£13.20
UIV232-4S-RU	2p + E	32A 3PIN 100-130V COUPLER IP67	4	5	£17.06
UIV232-6S-RU	2p + E	32A 3PIN 200-250V COUPLER IP67	6	5	£17.59
UIV416-6S-RU	3p + N + E	16A 5PIN 200-415V COUPLER IP67	6	5	£16.61
UIV432-6S-RU	3p + N + E	32A 5PIN 200-415V COUPLER IP67	6	5	£19.15



PV416-6S



UIV232-4S-RU



SV232-6S

PLUGS 16A - 63A - IP44

Code	Poles	Description	Colour Code	Package Size	Trade Price
P216-4S	3 2p + E	16A 3PIN 100-130V PLUG	4	10	£2.80
P216-6S		16A 3PIN 200-250V PLUG	6	10	£2.80
P232-4S		32A 3PIN 100-130V PLUG	4	10	£7.75
P232-6S		32A 3PIN 200-250V PLUG	6	10	£7.75
P263-6S		63A 3PIN 200-250V PLUG	6	2	£34.40
P316-4S	4 3p + E	16A 4PIN 100-130V PLUG	4	10	£5.91
P316-6S		16A 4PIN 380-415V PLUG	6	10	£6.24
P332-6S		32A 4PIN 380-415V PLUG	6	10	£8.86
P363-6S		63A 4PIN 380-415V PLUG	6	2	£35.28
P416-6S	5 3p + N + E	16A 5PIN 200-415V PLUG	6	10	£5.20
P432-6S		32A 5PIN 200-415V PLUG	6	10	£7.49
P463-6S		63A 5PIN 200-415V PLUG	6	2	£37.00

WATERTIGHT PLUGS 16A - 125A - IP67

Code	Poles	Description	Colour Code	Package Size	Trade Price
PV216-4S	3 2p + E	16A 3PIN 100-130V PLUG IP67	4	10	£7.76
PV216-6S		16A 3PIN 200-250V PLUG IP67	6	10	£7.17
PV232-4S		32A 3PIN 100-130V PLUG IP67	4	10	£13.05
PV232-6S		32A 3PIN 200-250V PLUG IP67	6	10	£11.51
PV263-4S		63A 3PIN 100-130V PLUG IP67	4	2	£43.79
PV263-6S		63A 3PIN 200-250V PLUG IP67	6	2	£39.71
PV2125-6S		125A 3PIN 200-250V PLUG IP67	6	2	£90.52
PV316-4S	4 3p + E	16A 4PIN 100-130V PLUG IP67	4	10	£10.22
PV316-6S		16A 4PIN 380-415V PLUG IP67	6	10	£8.47
PV332-4S		32A 4PIN 100-130V PLUG IP67	4	10	£13.66
PV332-6S		32A 4PIN 380-415V PLUG IP67	6	10	£13.66
PV363-6S		63A 4PIN 380-415V PLUG IP67	6	2	£34.54
PV3125-6S		125A 4PIN 380-415V PLUG IP67	6	2	£102.13
PV416-6S	5 3p + N + E	16A 5PIN 200-415V PLUG IP67	6	10	£9.51
PV432-6S		32A 5PIN 200-415V PLUG IP67	6	10	£11.64
PV463-6S		63A 5PIN 200-415V PLUG IP67	6	2	£38.76
PV4125-6S		125A 5PIN 200-415V PLUG IP67	6	2	£108.64

SOCKETS 16A - 63A - IP44

Code	Poles	Description	Colour Code	Package Size	Trade Price
S216-4S		16A 3PIN 100-130V COUPLER	4	10	£4.66
S216-6S		16A 3PIN 200-250V COUPLER	6	10	£4.75
S232-4S	3 2p + E	32A 3PIN 100-130V COUPLER	4	10	£10.33
S232-6S		32A 3PIN 200-250V COUPLER	6	10	£9.05
S263-6S		63A 3PIN 200-250V COUPLER	6	2	£44.72
S316-4S		16A 4PIN 100-130V COUPLER	4	10	£7.20
S316-6S		16A 4PIN 380-415V COUPLER	6	10	£6.45
S332-6S	4 3p + E	32A 4PIN 380-415V COUPLER	6	10	£8.84
S363-6S		63A 4PIN 380-415V COUPLER	6	2	£48.11
S416-6S		16A 5PIN 200-415V COUPLER	6	10	£7.49
S432-6S	5 3p + N + E	32A 5PIN 200-415V COUPLER	6	10	£12.42
S463-6S		63A 5PIN 200-415V COUPLER	6	2	£52.97

WATERTIGHT SOCKETS 16A - 125A - IP67

Code	Poles	Description	Colour Code	Package Size	Trade Price
SV216-4S		16A 3PIN 100-130V COUPLER IP67	4	10	£9.74
SV216-6S		16A 3PIN 200-250V COUPLER IP67	6	10	£9.74
SV232-4S	3 2p + E	32A 3PIN 100-130V COUPLER IP67	4	10	£16.94
SV232-6S		32A 3PIN 200-250V COUPLER IP67	6	10	£11.89
SV263-4S		63A 3PIN 100-130V COUPLER IP67	4	2	£63.04
SV263-6S		63A 3PIN 200-250V COUPLER IP67	6	2	£48.61
SV2125-6S		125A 3PIN 200-250V COUPLER IP67	6	2	£93.08
SV316-4S		16A 4PIN 100-130V COUPLER IP67	4	10	£13.77
SV316-6S	4 3p + E	16A 4PIN 380-415V COUPLER IP67	6	10	£11.06
SV332-6S		32A 4PIN 380-415V COUPLER IP67	6	10	£18.04
SV363-6S		63A 4PIN 380-415V COUPLER IP67	6	2	£40.23
SV3125-6S		125A 4PIN 380-415V COUPLER IP67	6	2	£108.63
SV416-6S		16A 5PIN 200-415V COUPLER IP67	6	10	£12.73
SV432-6S	5 3p + N + E	32A 5PIN 200-415V COUPLER IP67	6	10	£15.54
SV463-6S		63A 5PIN 200-415V COUPLER IP67	6	2	£51.71
SV4125-6S		125A 5PIN 200-415V COUPLER IP67	6	2	£124.17

ANGLED PLUGS 16A - 32A - IP44

Code	Poles	Description	Colour Code	Package Size	Trade Price
PA216-6S	3 2p + E	16A 3PIN 200-250V PLUG ANGLED	6 ■	10	£9.05
PA416-4S		16A 5PIN 100-130V PLUG ANGLED	4 ■	10	£14.01
PA416-6S	5 3p + N + E	16A 5PIN 200-415V PLUG ANGLED	6 ■	10	£10.70
PA432-6S		32A 5PIN 200-415V AN- GLED PLUG	6 ■	10	£15.24



PA216-6S



PA432-6S

PHASE INVERTER 16A - 32A - IP44

Code	Poles	Description	Colour Code	Package Size	Trade Price
FV316-6S	4 2p + N + E	16A 4 PIN PHASE INVERTER PLUG	6 ■	10	£17.71
FV416-6S	5 3p + N + E	16A 5 PIN PHASE INVERTER PLUG	6 ■	10	£16.14
FV432-6S	5 3p + N + E	32A 5 PIN PHASE INVERTER PLUG	6 ■	10	£18.73



FV316-6S



FV432-6S

WALL SOCKET 16A - 63A - IP44

Code	Poles	Description	Colour Code	Package Size	Trade Price
UI216-4S-RU		16A 3PIN 100-130V WALL SOCKET	4	10	£7.47
UI216-6S-RU		16A 3PIN 200-250V WALL SOCKET	6	10	£7.47
UI232-4S-RU	3 2p + E	32A 3PIN 100-130V WALL SOCKET	4	10	£9.05
UI232-6S-RU		32A 3PIN 200-250V WALL SOCKET	6	10	£12.29
UI263-6S-RU		63A 3PIN 200-250V SOCKET DOUBLE ENTRY	6	2	£44.73
UI316-4S-RU		16A 4PIN 110V WALL SOCKET	4	10	£9.86
UI316-6S-RU		16A 4PIN 400V WALL SOCKET	6	10	£7.61
UI332-6S-RU	4 3p + E	32A 4PIN 400V WALL SOCKET	6	10	£8.84
UI363-6S-RU		63A 4PIN 400V SOCKET DOUBLE ENTRY	6	2	£45.51
UI416-6S-RU		16A 5PIN 230-400V WALL SOCKET	6	10	£9.84
UI432-6S-RU	5 3p + N +E	32A 5PIN 230-400V WALL SOCKET	6	10	£12.92
UI463-6S-RU		63A 5PIN 230-400V SOCKET DOUBLE ENTRY	6	2	£49.13



UI332-6S-RU



UI316-4S-RU

WALL SOCKET 16A - 32A - IP44

With Double Entry

Code	Poles	Description	Colour Code	Package Size	Trade Price
UI216-4DE-RU		16A 3PIN 110V SOCKET DOUBLE ENTRY	4	10	£12.51
UI216-6DE-RU	3 2p + E	16A 3PIN 220V SOCKET DOUBLE ENTRY	6	10	£10.41
UI232-6DE-RU		32A 3PIN 220V SOCKET DOUBLE ENTRY	6	10	£13.80
UI263-6S-RU		63A 3PIN 200/250V SOCKET DOUBLE ENTRY	6	2	£44.73
UI316-6DE-RU		16A 4PIN 380V SOCKET DOUBLE ENTRY	6	10	£12.37
UI332-6DE-RU	4 3p + E	32A 4PIN 380V SOCKET DOUBLE ENTRY	6	10	£14.01
UI363-6S-RU		63A 4PIN 400V SOCKET DOUBLE ENTRY	6	2	£45.51
UI416-6DE-RU		16A 5PIN 380V SOCKET DOUBLE ENTRY	6	10	£13.11
UI432-6DE-RU	5 3p + N +E	32A 5PIN 380V SOCKET DOUBLE ENTRY	6	10	£14.70
UI463-6S-RU		63A 5PIN 230/400V SOCKET DOUBLE ENTRY	6	2	£49.13



UI332-6DE -RU



UI263-6S - RU

WATERTIGHT WALL SOCKET 16A - 125A - IP67

Code	Poles	Description	Colour Code	Package Size	Trade Price
UIV216-4S-RU		16A 3PIN 100-130V WALL SKT IP67	4	5	£15.07
UIV216-6S-RU		16A 3PIN 200-250V WALL SKT IP67	6	5	£13.20
UIV232-4S-RU		32A 3PIN 100-130V WALL SKT IP67	4	5	£17.06
UIV232-6S-RU	3 2p + E	32A 3PIN 200-250V WALL SKT IP67	6	5	£17.59
UIV263-4S-RU		63A 3PIN 10V WALL SKT IP67	4	2	£55.44
UIV263-6S-RU		63A 3PIN 200-250V WALL SKT IP67	6	2	£43.38
UIV2125-6S-RU		125A 3PIN 200-250V WALL SKT IP67	6	1	£118.98
UIV316-4S-RU		16A 4PIN 110V WALL SKT IP67	4	5	£18.63
UIV316-6S-RU		16A 4PIN 380-415V WALL SKT IP67	6	5	£15.24
UIV332-6S-RU	4 3p + E	32A 4PIN 380-415V WALL SKT IP67	6	5	£18.93
UIV363-6S-RU		63A 4PIN 380-415V WALL SKT IP67	6	2	£45.40
UIV3125-6S-RU		125A 4PIN 380-415V WALL SKT IP67	6	1	£124.17
UIV416-6S-RU		16A 5PIN 240-415V WALL SKT IP67	6	5	£16.61
UIV432-6S-RU	5 3p + N	32A 5PIN 240-415V WALL SKT IP67	6	5	£19.15
UIV463-6S-RU	+ E	63A 5PIN 240-415V WALL SKT IP67	6	2	£65.57
UIV4125-6S-RU		125A 5PIN 240-415V WALL SKT IP67	6	1	£137.07



UIV2125-6S - RU



UIV363-6S - RV



UIV316-4S - RU

WALL INLET 16A - 63A - IP44

Code	Poles	Description	Colour Code	Package Size	Trade Price
I1216-4S-RI		16A 3PIN 100-130V WALL INLET IP44	4	10	£10.61
I1216-6S-RI		16A 3PIN 200-250V WALL INLET IP44	6	10	£9.63
I1232-4S-RI	3 2p + E	32A 3PIN 100-130V WALL INLET IP44	4	10	£13.97
I1232-6S-RI		32A 3PIN 200-250V WALL INLET IP44	6	10	£13.25
I1263-6S-RI		63A 3PIN 200-250V SOCKET INLET	6	2	£59.73
I1316-4S-RI		16A 4PIN 110V SOCKET INLET IP44	4	10	£14.45
I1316-6S-RI	4 3p + E	16A 4PIN 400V WALL INLET IP44	6	10	£11.33
I1332-6S-RI		32A 4PIN 400V WALL INLET IP44	6	10	£13.70
I1416-6S-RI		16A 5PIN 230-400V WALL INLET IP44	6	10	£12.29
I1432-6S-RI	5 3p + N + E	32A 5PIN 230-400V WALL INLET IP44	6	10	£14.45
I1463-6S-RI		63A 5PIN 230-400V SOCKET INLET	6	2	£59.65



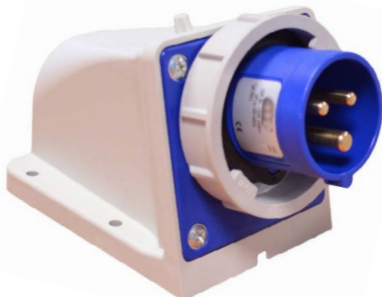
I1316-4S - RI



I1216-6S - RI

WATERTIGHT WALL INLET 16A - 125A - IP67

Code	Poles	Description	Colour Code	Package Size	Trade Price
IIV216-4S-RI		16A 3PIN 110V WALL INLET IP67	4	10	£26.25
IIV216-6S-RI		16A 3PIN 220-250V WALL INLET IP67	6	10	£25.90
IIV232-4S-RI		32A 3PIN 0V WALL INLET IP67	4	10	£31.27
IIV232-6S-RI	3 2p + E	32A 3PIN 220-250V WALL INLET IP67	6	10	£34.93
IIV263-4S-RI		63A 3PIN 110V WALL INLET IP67	4	2	£80.78
IIV263-6S-RI		63A 3PIN 220-250V WALL INLET IP67	6	2	£58.41
IIV2125-6-RI		125A 3PIN 220-250V WALL INLET IP67	6	1	£122.84
IIV332-6S-RI		32A 4PIN 380-415V WALL INLET IP67	6	10	£33.62
IIV363-6S-RI	4 3p + E	63A 4PIN 240-415V WALL INLET IP67	6	2	£51.37
IIV3125-6S-RI		125A 4PIN 380-415V WALL INLET IP67	6	1	£153.63
IIV416-6S-RI		16A 220V 4P+E WALL INLET IP67	6	10	£26.44
IIV432-6S-RI		32A 5PIN 240-415V WALL INLET IP67	6	10	£27.76
IIV463-6S-RI	5 3p + N + E	63A 5PIN 240-415V WALL INLET IP67	6	2	£56.89
IIV4125-6S-RI		125A 5PIN 240-415V WALL INLET IP67	6	1	£131.89



IIV2125-6 - RI



IIV3125-6S - RI

CONNECTION OUTLETS 3 WAY - IP44

Code	Description	Colour Code	Package Size	Trade Price
P3S216-4S	Conn-3way 3x16/3 Plug16/3, 4h, 3P, 110-130V IP44	4	1	£57.84
P3S216-6S	Conn-3way 3x16/3 Plug16/3, 6h,3P 200 - 250V IP44	6	1	£52.58



CONNECTION OUTLETS 3 WAY - IP67

Code	Description	Colour Code	Package Size	Trade Price
PV3S216-4S	Conn-3way 3x16/3 Plug16/3, 4h, 3P, 110-130V, IP67	4	1	£77.25
PV3S216-6S	Conn -3way 3x16/3 Plug16/3, 6h, 3P, 200 - 250V IP67	6	1	£70.25



ADAPTOR - IP44

Code	Description	Colour Code	Package Size	Trade Price
I1216-6-13A	16A 3 PIN CEE TO 13A, 3 PIN ADA, 200 - 250V	6	10	£20.80



PANEL MOUNTED SOCKET - IP44 WITH STRAIGHT MOUNTING PLATE

Code	Poles	Description	Colour Code	Package Size	Trade Price
UII216-4S		16A 3PIN 100-130V SOCKET	4	10	£4.57
UII216-6S		16A 3PIN 200-250V SOCKET	6	10	£4.17
UI216-4S		16A 3PIN 100-130V SOCKET	4	10	£4.53
UI216-6S	3	16A 3PIN 200-250V SOCKET	6	10	£4.17
UI232-4S	2p + E	32A 3PIN 100-130V SOCKET	4	10	£6.13
UI232-6S		32A 3PIN 200-250V SOCKET	6	10	£5.71
UI263-4S		63A 3PIN 110V SOCKET	4	2	£46.87
UI263-6S		63A 3PIN 200-250V SOCKET	6	2	£36.03
UI316-6S		16A 4PIN 400V SOCKET	6	10	£5.21
UI332-6S	4 3p + E	32A 4PIN 400V SOCKET	6	10	£6.68
UI363-6S		63A 4PIN 400V SOCKET	6	2	£34.73
UI416-6S	5	16A 5PIN 230-400V SOCKET	6	10	£5.43
UI432-6S	3p + N + E	32A 5PIN 230-400V SOCKET	6	10	£7.73
UI463-6S		63A 5PIN 230-400V SOCKET	6	2	£38.21



UI263-4S



UII216-4S



UI416-6S

PANEL MOUNTED SOCKET - IP44 WITH ANGLED MOUNTING PLATE

Code	Poles	Description	Colour Code	Package Size	Trade Price
UIS216-4S		16A 3PIN 100-130V SOCKET ANGLED	4	10	£4.46
UIS216-6S		16A 3PIN 200-250V SOCKET ANGLED	6	10	£4.08
UIS232-4S	3 2p + E	32A 3PIN 100-130V SOCKET ANGLED	4	10	£7.19
UIS232-6S		32A 3PIN 200-250V SOCKET ANGLED	6	10	£6.13
UIS263-6S		63A 3PIN 200-250V SOCKET ANGLED	6	2	£34.48
UIS316-6S		16A 4PIN 400V SOCKET ANGLED	6	10	£5.12
UIS332-6S		32A 4PIN 400V SOCKET ANGLED	6	10	£6.32
UIS363-4S	4 3p + E	63A 4PIN 100-130V SOCKET ANGLED	4	2	£36.88
UIS363-6S		63A 4PIN 400V SOCKET ANGLED	6	2	£36.88
UIS416-6S		16A 5PIN 230-400V SOCKET ANGLED	6	10	£5.31
UIS432-6S	5 3p + N + E	32A 5PIN 230-400V SOCKET ANGLED	6	10	£7.56
UIS463-6S		63A 5PIN 230-400V SOCKET ANGLED	6	2	£38.23



UIS263-6S



UIS363-6S

WATERTIGHT PANEL MOUNTED SOCKET - IP67 WITH ANGLED MOUNTING PLATE

Code	Poles	Description	Colour Code	Package Size	Trade Price
UISV216-4S		16A 3PIN 100-130V PANEL SKT IP67	4	10	£10.39
UISV216-6S		16A 3PIN 200-250V PANEL SKT IP67	6	10	£10.42
UISV232-4S	3 2p + E	32A 3PIN 110V PANEL SKT IP67	4	10	£12.50
UISV232-6S		32A 3PIN 220V PANEL SKT IP67	6	10	£12.50
UISV263-6S		63A 3PIN 200-250V PANEL SKT IP67	6	2	£36.40
UISV2125-6S		125A 3PIN 220V PANEL SKT IP67	6	2	£69.50
UISV316-6S		16A 4PIN 380-415V PANEL SKT IP67	6	10	£10.76
UISV332-6S	4 3p + E	32A 4PIN 380V PANEL SKT IP67	6	10	£12.50
UISV3125-6S		125A 4PIN 380-415V PANEL SKT IP67	6	2	£70.36
UISV416-6S		16A 5PIN 240-415V PANEL SKT IP67	6	10	£11.86
UISV432-6S	5 3p + N + E	32A 5PIN 380V PANEL SKT IP67	6	10	£14.59
UISV463-6S		63A 5PIN 230-400V PANEL SKT IP67	6	2	£40.31
UISV4125-6S		125A 5PIN 240-415V SOCKET IP67	6	2	£74.18



UISV232-4S



UISV416-6S

PANEL MOUNTED INLET - IP44 WITH STRAIGHT MOUNTING PLATE

Code	Poles	Description	Colour Code	Package Size	Trade Price
I1216-4S	3 2p+E	16A 3PIN 100-130V PANEL INLET	4	10	£5.02
I1216-6S		16A 3PIN 220V PANEL INLET	6	10	£5.02
I1232-4S		32A 3PIN 100-130V PANEL INLET	4	10	£7.25
I1232-6S	4 3p + E	32A 3PIN 220V PANEL INLET	6	10	£7.30
I1263-6S		63A 3PIN 220V PANEL INLET	6	4	£35.30
I1316-4S		16A 110V 3P+E INLET PANEL MOUNTED	4	10	£7.18
I1316-6S	16A 380V 3P+E INLET PANEL MOUNTED	6	10	£6.26	
I1332-6S	5 3p+N+E	32A 4PIN 400V WALL INLET IP44	6	10	£8.46
I1416-6S		16A 5PIN 380V PANEL INLET	6	10	£6.26
I1432-6S		32A 380V 5PIN PANEL INLET	6	10	£8.32



I1263-6S



IIV363-6

WATERTIGHT PANEL MOUNTED INLET - IP67 WITH ANGLED MOUNTING PLATE

Code	Poles	Description	Colour Code	Package Size	Trade Price
IIV263-4	3 2p + E	63A 3PIN 110V PANEL INLET IP67	4	2	£58.43
IIV263-6		63A 3PIN 220V PANEL INLET IP67	6	2	£43.98
IIV2125-4		125A 3PIN 110V PANEL INLET IP67	4	2	£110.98
IIS2125-6S	4 3p + E	125A 3PIN 220V PANEL INLET IP67	6	2	£105.87
IIV363-6		63A 4PIN 400V PANEL INLET IP67	6	2	£49.19
IIV3125-6		125A 4 PIN 380V PANEL INLET IP67	6	2	£106.92
IIV463-6	5 3p + N + E	63A 5PIN 380V PANEL INLET IP67	6	2	£51.11
IIV4125-6		125A 5PIN 415V PANEL INLET IP67	6	2	£95.17

COMBINATION UNITS - IP44 WALL SOCKET WITH 4 MODULE WINDOWS

Code	Poles	Description	Colour Code	Package Size	Trade Price
URBB216-4S		16A 3PIN 110V SOCKET C/W 4MODULE	4	1	£76.96
URBB216-6S	3	16A 3PIN 230V SOCKET C/W 4MODULE	6	1	£71.04
URBB232-4S	2p+E	32A 3PIN 110V SOCKET C/W 4MODULE	4	1	£86.68
URBB232-6S		32A 3PIN 230V SOCKET C/W 4MODULE	6	1	£79.07
URBB316-6S	4	16A 4PIN 400V SOCKET C/W 4 MODULE	6	1	£72.31
URBB332-6S	3p + E	32A 4PIN 400V SOCKET C/W 4 MODULE	6	1	£79.50
URBB416-6S	5	16A 5PIN 400V SOCKET C/W 4MODULE	6	1	£72.74
URBB432-6S	3p+N+E	32A 5PIN 400V SOCKET C/W 4MODULE	6	1	£79.92



RBB232-6S



URBB216-4S

INTERLOCKED SOCKET OUTLET - IP44

Code	Poles	Description	Colour Code	Package Size	Trade Price
UBB216-4S		16A 3PIN 110V SWITCHED SOCKET	4	1	£64.06
UBB216-6S	3	16A 3PIN 230V SWITCHED SOCKET	6	1	£61.32
UBB232-4S	2p+E	32A 3PIN 110V SWITCHED SOCKET	4	1	£65.33
UBB232-6S		32A 3PIN 220V SWITCHED SOCKET	6	1	£64.06
UBB316-6S	4	16A 4PIN 400V SWITCHED SOCKET	6	1	£71.87
UBB332-6S	3p + E	32A 4PIN 400V SWITCHED SOCKET	6	1	£67.65
UBB416-6S	5	16A 5PIN 400V SWITCHED SOCKET	6	1	£72.74
UBB432-6S	3p+N+E	32A 5PIN 400V SWITCHED SOCKET	6	1	£87.96



UBB332-6S



UBB232-4S

WATERTIGHT INTERLOCKED SOCKET OUTLETS IP67

Code	Poles	Description	Colour Code	Package Size	Trade Price
UBC216-4S		16A 3PIN 100-130V INTERLOCKED SWDS IP67	4	1	£71.69
UBC216-6S		16A 3PIN 200-250V INTERLOCKED SWDS IP67	6	1	£71.69
UBC232-4S	3 2p + E	32A 3PIN 100-130V INTERLOCKED SWDS IP67	4	1	£75.33
UBC232-6S		32A 3PIN 200-250V INTERLOCKED SWDS IP67	6	1	£75.33
UBV263-6SI		63A 3PIN 200-250V INTERLOCKED SWDS IP67	6	1	£207.83
UBC316-6S		16A 4PIN 400V INTERLOCKED SWDS IP67	6	1	£73.18
UBC332-6S	4 3p + E	32A 4PIN 400V INTERLOCKED SWDS IP67	6	1	£80.37
UBV363-6SI		63A 4PIN 400V INTERLOCKED SWDS IP67	6	1	£217.06
UBC416-6S		16A 5PIN 230-400V INTERLOCKED SWDS IP67	6	1	£77.10
UBC432-6S	5 3p + N + E	32A 5PIN 230-400V INTERLOCKED SWDS IP67	6	1	£109.93
UBV463-6S		63A 5PIN 230-400V INTERLOCKED SWDS IP67	6	1	£217.60



UBC232-4S



UBV2125-6S

125A

Code	Poles	Description	Colour Code	Package Size	Trade Price
UBV2125-6S	3 2p + E	125A 3PIN 230-400V INTERLOCKED SWDS IP67	6	1	£1,041.84
UBV3125-6S	4 3p + E	125A 4PIN 230-400V INTERLOCKED SWDS IP67	6	1	£1,062.60
UBV4125-6S	5 3p + N + E	125A 5PIN 230-400V INTERLOCKED SWDS IP67	6	1	£1,094.51

WATERTIGHT INTERLOCKED COMBINATION UNITS IP67

16A

Code	Poles	Description	Colour Code	Package Size	Trade Price
URBBV216-4S	3	16A 3PIN 100-130V SWD SKT 4MOD DIN	4	1	£109.95
URBBV216-6S	2p + E	16A 3PIN 220V SWD SKT C/W 4MOD DIN	6	1	£124.28
URBBV316-6S	4 3p + E	16A 4PIN 380V SWD SKT C/W 4MOD DIN	6	1	£120.71
URBBV416-4S	5	16A 5PIN 100-130V SWD SKT 4MOD DIN	4	1	£116.24
URBBV416-6S	3p + N + E	16A 5PIN 380V SWD SKT C/W 4MOD DIN	6	1	£116.24

32A

Code	Poles	Description	Colour Code	Package Size	Trade Price
URBBV232-4S	3	32A 3PIN 100-130V SWD SKT 4MOD DIN	4	1	£165.24
URBBV232-6S	2p + E	32A 3PIN 220V SWD SKT C/W 4MOD DIN	6	1	£165.24
URBBV332-6S	4 3p + E	32A 4PIN 380V SWD SKT C/W 4MOD DIN	6	1	£171.53
URBBV432-6S	5 3p + N + E	32A 5PIN 380V SWD SKT C/W 4MOD DIN	6	1	£176.70

63A

Code	Poles	Description	Colour Code	Package Size	Trade Price
URBBV263-6S	3 2p + E	63A 3PIN 220V SWD SKT C/W 4MOD DIN	6	1	£256.43
URBBV363-6S	4 3p + E	63A 4PIN 380V SWD SKT C/W 4MOD DIN	6	1	£265.66
URBBV463-6S	5 3p + N + E	63A 5PIN 415V SWD SKT C/W 4MOD DIN	6	1	£274.91



URBBV316-6S



URBBV232-4S



URBBV263-6S

COMBINATION UNITS with RCCB IP44

16A

Code	Poles	Description	Colour Code	Package Size	Trade Price
URBB216-6SCR	2p+E	16A 3PIN 230V SOCKET C/W 4MOD	6 ■	1	£108.27
URBB316-6SCR	4 3p + E	16A 4PIN 400V SOCKET C/W 4 MOD IP44	6 ■	1	£131.94
URBB416-6SCR	3p + N + E	16A 5PIN 400V SOCKET C/W 4MOD IP44	6 ■	1	£132.39



URBB316-6SCR

32A

Code	Poles	Description	Colour Code	Package Size	Trade Price
URBB232-6SCR	2p+E	32A 3PIN 230V SOCKET C/W 4MOD IP4	6 ■	1	£116.31
URBB332-6SCR	4 3p + E	32A 4PIN 400V SOCKET C/W 4 MOD IP44	6 ■	1	£139.14
URBB432-6SCR	5 3p+N+E	32A 5PIN 400V SOCKET C/W 4MOD IP44	6 ■	1	£139.57



URBB432-6SCR

INTERLOCKED COMBINATION UNITS with RCCB IP67

16A

Code	Poles	Description	Colour Code	Package Size	Trade Price
URBBV216-6SCR	2p+E	16A 3PIN 220V SWD SKT C/W 4MOD DIN	6 ■	1	£161.52
URBBV316-6SCR	4 3p + E	16A 4PIN 380V SWD SKT C/W 4MOD DIN	6 ■	1	£180.37
URBBV416-6SCR	3p + N + E	16A 5PIN 380V SWD SKT C/W 4MOD DIN	6 ■	1	£175.87

32A

Code	Poles	Description	Colour Code	Package Size	Trade Price
URBBV232-6SCR	2p+E	32A 3PIN 220V SWD SKT C/W 4MOD DIN	6 ■	1	£202.48
URBBV332-6SCR	4 3p + E	32A 4PIN 380V SWD SKT C/W 4MOD DIN	6 ■	1	£231.16
URBBV432-6SCR	5 3p+N+E	32A 5PIN 380V SWD SKT C/W 4MOD DIN	6 ■	1	£236.34

63A

Code	Poles	Description	Colour Code	Package Size	Trade Price
URBBV263-6SCR	3 2p + E	63A 3PIN 220V SWD SKT C/W 4MOD DIN	6 ■	1	£296.23
URBBV363-6SCR	4 3p + E	63A 4PIN 380V SWD SKT C/W 4MOD DIN	6 ■	1	£344.72
URBBV463-6SCR	5 3p+N+E	63A 5PIN 415V SWD SKT C/W 4MOD DIN	6 ■	1	£353.98



URBBV332-6SCR

ENTERTAINMENT RANGE - IP44

Plugs

16A

Code	Poles	Description	Colour Code	Package Size	Trade Price
P216-6S-B	3- 2p+E	16A 3PIN 200-250V PLUG *BLACK	6 ■	10	£4.05
P316-6S-B	4- 3p+E	16A 4PIN 400V PLUG *BLACK	6 ■	10	£5.22
P416-6S-B	5- 3p+N+P	16A 5PIN 230-400V PLUG *BLACK	6 ■	10	£5.71

32A

Code	Poles	Description	Colour Code	Package Size	Trade Price
P232-6S-B	3- 2p+E	32A 3PIN 200-250V PLUG *BLACK	6 ■	10	£7.47
P332-6S-B	4- 3p+E	32A 4PIN 400V PLUG *BLACK	6 ■	10	£7.94
P432-6S-B	5- 3p+N+P	32A 5PIN 230-400V PLUG *BLACK	6 ■	10	£8.38

Sockets

16A

Code	Poles	Description	Colour Code	Package Size	Trade Price
S216-6S-B	3- 2p+E	16A 3PIN 200-250V CUPLR *BLACK	6 ■	10	£5.71
S316-6S-B	4- 3p+E	16A 4PIN 400V CUPLR *BLACK	6 ■	10	£7.23
S416-6S-B	5- 3p+N+P	16A 5PIN 230-400V CUPLR *BLACK	6 ■	10	£8.58

32A

Code	Poles	Description	Colour Code	Package Size	Trade Price
S232-6S-B	3- 2p+E	32A 3PIN 200-250V CUPLR *BLACK	6 ■	10	£9.80
S332-6S-B	4- 3p+E	32A 4PIN 400V CUPLR *BLACK	6 ■	10	£9.96
S432-6S-B	5- 3p+N+P	32A 5PIN 230-400V CUPLR *BLACK	6 ■	10	£11.20



P216-6S-B



S232-6S-B

WATERTIGHT ENTERTAINMENT RANGE - IP67

Plugs

63A

Code	Poles	Description	Colour Code	Package Size	Trade Price
P263-6S-B	3- 2p+E	63A 3PIN 200-250V PLUG * BLACK	6 ■	2	£44.82
P363-6S-B	4- 3p+E	63A 4PIN 380- 415V PLUG *BLACK	6 ■	2	£46.19
P463-6S-B	5- 3p+N+P	63A 5PIN 200-415V PLUG *BLACK	6 ■	2	£52.10

125A

Code	Poles	Description	Colour Code	Package Size	Trade Price
P2125-6S-B	3- 2p+E	125A 3PIN 200-250V PLUG IP67 *BL	6 ■	2	£103.29
P3125-6S-B	4- 3p+E	125A 4PIN 380-415V PLUG IP67 *BL	6 ■	2	£104.53
P4125-6S-B	5- 3p+N+P	125A 5PIN 200-415V PLUG IP67 *BL	6 ■	2	£115.00

Sockets

63A

Code	Poles	Description	Colour Code	Package Size	Trade Price
S263-6S-B	3- 2p+E	63A 3PIN 200-250V COUPLER *BL	6 ■	2	£54.82
S363-6S-B	4- 3p+E	63A 4PIN 380- 415V COUPLER *BL	6 ■	2	£56.64
S463-6S-B	5- 3p+N+P	63A 5PIN 200-415V PLUG IP67 *BL	6 ■	2	£60.09

125A

Code	Poles	Description	Colour Code	Package Size	Trade Price
S2125-6S-B	3- 2p+E	125A 3PIN 200-250V COUPLER IP67 *BL	6 ■	2	£113.22
S3125-6S-B	4- 3p+E	125A 4PIN 200-415V COUPLER IP67 *BL	6 ■	2	£119.60
S4125-6S-B	5- 3p+N+P	125A 5PIN 200-415V PLUG IP67 *BL	6 ■	2	£126.30



S4125-6S-B



P463-6S-B

ELECTRIC VEHICLE CHARGING

- 63** Entity Pro Single 7.4kW
- 64** Entity Pro Single 22kW
- 65** Entity Pro Dual Charge Point
- 67** Entity Pro Accessories
- 70** GTB+ AC Charging
- 71** LS4 AC Charging
- 73** 43kW LS4 - AC Charging
- 74** Alio Payment System
- 75** Atle - 24kW
- 76** Rapid 60, 120 & 180
- 77** EV Charging Cables

After more than 80 years in the industry, GARO is a reliable supplier of all types of electric vehicle charging.



WiFi or RFID



Back office
Solutions



DC Leakage
Protection



Dynamic Load
Management



Innovation
Safety
Quality
Convenience
Control



*Chargers that work today and
adapt to the future.*

Key Features

- Smart Bracket (Easy Install/Service)
- Outlet or Cable
- 4G/OCPP
- Load Balancing (Wireless)
- Easy and Convenient App
- 4 Colours Available
- Flexible Outlet / Cable / Parking Position
- Single or Double Bracket

With its minimalist design and powerful software, GARO Entity Pro is the perfect solution for your charging needs. With support for both 1 phase and 3 phase charging. Its charges all cars and is suitable for all car models.

ENTITY PRO

Entity is the next-generation charging box with innovation, safety and quality at the fingertips of EV drivers across the globe.



Suitable For:

Residential and Commercial

- Homes
- Apartment Buildings
- Workplaces
- Public Spaces



ENTITY PRO 7.4kW

Socket

Code	Description	Trade Price
EPCSO0132SIGIPEN	Entity Pro 1-ph, 4G, PME, outlet, 32A	£1,897.19



Lead

Code	Description	Trade Price
EPCSC50132FIGIP	Entity Pro 1-ph, 4G, PME, outlet, 32A, Lead 5M	£1,935.00
EPCSC80132FIGIP	Entity Pro 1-ph, 4G, PME, outlet, 32A, Lead 8M	£1,995.00



Load Management for Entity 7.4kW Chargers

Code	Description	Trade Price
GMS5EV40LM60	Load Management Kit & Distribution Board	£226.00
GMS5EV40LM80	Load Management Kit & Distribution Board	£226.00

ENTITY PRO 22kW

Socket

Code	Description	Trade Price
EPCSO00332SIGI	Entity Pro 3-Ph, 4G Phase balancing, outlet, 32A	£1,948.92
EPCSO00332SVGI	Entity Pro 3-Ph, 4G Phase balancing, outlet, 32A, MID	£2,169.60



Standard



MID with Cable

Lead

Code	Description	Trade Price
EPCS40332SIGI	Entity Pro 3-ph, 4G, phase balancing, cable 32A 4m	£2,075.77



ENTITY PRO DUAL

Dual Charge Point

Code	Description	Trade Price
EPCSO00332SIGIO	Entity Double Pro 3-Ph, 4G Phase balancing, outlet, 32A	£4,032.98
EPCSO00332SVGIO	Entity Double Pro 1-ph, 4G, PME, outlet, 32A	£3,829.36



Dual Charge Point - Back to Back

Code	Description	Trade Price
EPCSDP22BTB	Entity Double Pro 3-Ph, 4G Phase balancing, outlet, 32A, 22KW Dual Entity pedestal	£4,628.00
EPCSDP74BTB	Entity Double Pro 3-Ph, 4G Phase balancing, outlet, 32A, 7.4KW Dual Entity pedestal	£4,524.00



Dual Charge Point - Side by Side

Code	Description	Trade Price
EPCSDP22SBS	Entity Double Pro 3-Ph, 4G Phase balancing, outlet, 32A, 22KW Dual Entity pedestal	£4,804.80
EPCSDP74SBS	Entity Double Pro 3-Ph, 4G Phase balancing, outlet, 32A, 7.4KW Dual Entity pedestal	£4,700.80



ENTITY PRO ACCESSORIES

Entity Pro without Front and Back Installation Plate

Code	Description	Trade Price
EPCUO00132SIGIPEN	Charging unit Pro 1-Ph, 4G Phase balancing, outlet, 32A	£1,776.57
EPCUO00332SIGI	Charging unit Pro 3-Ph, 4G Phase balancing, outlet, 32A, MID	£1,876.85
EPCU40332SIGI	Charging unit Pro 3-Ph, 4G Phase balancing, cable, 20A	£1,956.83
EPCUO00332SVGI	Charging unit 3-ph, 4G, Phase balancing, cable 32A 4m	£2,089.97

Entity Pro Installation Back Plate

Code	Description	Trade Price
EPIBSO	Pro Installation Single Back Plate	£121.85
EPIBDO	Pro Installation Double Back Plate	£121.85

Entity Pro Installation Back Plate with Front Protection Cover

Code	Description	Trade Price
EPIBS	Entity Pro Single Installation Bracket with Front Cover	£137.14
EPIBD	Entity Pro Dual Installation Bracket with Front Cover	£248.45

Entity Pro Front Plate

Code	Description	Trade Price
EPPC	Entity Pro Protection Cover	£36.36



EPIBSO

Back Plate



EPPC

Protection Cover



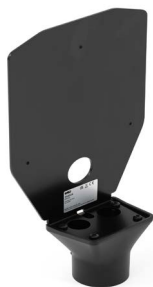
EPIBD

Dual Protection Cover

ENTITY PRO ACCESSORIES

Entity Installation Poles

Code	Description	Trade Price
MVRF	In Ground Pole 1550mm Diameter 60mm	£130.48
MVRP	Plinth Mounted Pole 750mm diameter 60mm	£100.26
EPPFS	Entity Pro Pole mount back plate & bracket single 60mm	£113.76



EPPFS



MVRP



MVRF

Entity Ground Mounted Stands

Code	Description	Trade Price
EPGSS	Entity Pro Ground Stand single and back to back	£474.75
EPGSD	Entity Pro Ground Stand Dual side by side and back to back	£729.78
EPGCA	Concrete anchor bolts and bracket for Entity stand	£273.34
EPSSC	Entity Pro Ground stand Installation kit and Terminals	£121.41
EPGSH	Entity Stand Mounted Cable Hook	£38.07
EWH	Entity Wall Mounted Cable hook	£53.21



EPGSS



EWH



EPGSD

ENTITY PRO ACCESSORIES

Load Management

Code	Description	Trade Price
ELIB	Entity load interface unit BASIC	£504.41
ELIA	Entity load interface unit ADVANCED	£564.73
ELIANT	External Antenna Kit (wifi)	£72.02
GDT16-100A	Current transformer KIT 100A/333mV	£97.10
GDT16-100A-1	Single Current Transformer	£38.00
GDT36-300A	300A Split Core CT 300/5A 3 Pcs	£503.69
GDT36-600A	600A Split Core CT 300/5A 3 Pcs	£539.97

*Note : GDT CT clamps require additional accessories



ELIANT



ELIB

Entity Front Covers

Code	Description	Trade Price
EPFCB	GARO Entity Pro Front Cover Black	£31.81
EPFCG	GARO Entity Pro Front Cover Grey	£43.35
EPFCW	GARO Entity Pro Front Cover White	£43.35
EPFCR	GARO Entity Pro Front Cover Red	£43.35



GTB+ - AC Charging

Dual Charge Point

LAN Version

Code	Description	Trade Price
GTBBDCMT274LANUK	OCPP 2 X 7.4kw Dual Charger LAN, Meter RFID	£5,860.32
GTBBDCM222LANUK	OCPP 2 X 22kw Dual Charger LAN Meter RFID	£6,407.69

4G Version

Code	Description	Trade Price
GTBBDCMT274MCUK	OCPP 2 X 7.4kw Dual Charger 4G Meter RFID	£6,342.52
GTBBDCMT222MCUK	OCPP 2 X 22kw Dual Charger 4G Meter RFID	£7,202.68



GTB ACCESSORIES

Code	Description	Trade Price
GNM3D-RS485	Three Phase DLM or local Meter 63 Amps	£200.86
DLM300	Three Phase CT DLM Meter 300 Amps	£881.23
DLM600	Three Phase CT DLM Meter 600 Amps	£881.72
GTB-PB-TUBE60	GTB Post Bracket 60mm (to be used with MVRP or MVRF)	£130.48
MVRF	In Ground Fixing.. Post 1550mm for GLBFD/ST-GHL/LS4-PM	£130.48
MVRP	Plate mounted post 750mm for GTB	£100.26
GTB-PB-OVAL	GTB Post Bracket (to be used with MVR-AB)	£203.48
MVR-AB	Plate Mounted post Oval for GTB	£336.91

Communication & Access

Code	Description	Trade Price
RFID Cards	Pack of 5 RFID cards	£70.79
RFID Tags	Pack of 5 RFID Tags	£70.79

AC Charging - LS4



The GARO LS4 is a safe bet for the future. Made primarily of aluminium, which is both weather-resistant and self-healing, it meets the strict requirements for public charging stations. Moreover, the light strip indicating the current charging status is high up to ensure good visibility even from a distance. The illuminated front and simple interface makes car charging a breeze for users. The LS4 is available with full custom vinyl wrapping based on your own graphic design.

Key Features

- Simple and intuitive operation
- User identification - RFID reader
- Charger status information
- Optional integration with Back Office (OCPP)
- Built-in communication (4G or LAN)
- Ability to activate DLM (dynamic load management of each socket)
- Personalisation with branding
- Floor-standing or wall-mounting
- Plug & play installation
- Local and remote monitoring and control of devices

LAN Version

Code	Description	Trade Price
LS4DCM222LANUK	2 x 22kw Outlets Metered, LAN & RFID	£6,621.16

4G Version

Code	Description	Trade Price
LS4DCM274MCIUK	2 x 7.4kw Outlets Metered, RFID & 4G	£6,775.20
LS4DCM222MCIUK	2 x 22kw Outlets Metered, RFID & 4G	£7,006.31



The GARO LS4 is available with an output of 3.7–22 kW and has two Type 2 outlets in an illuminated recess, protected from weather and wind. Each outlet has its own separate energy meter, RFID reader, fuse and residual current device. The LS4 has DC current fault monitoring combined with a type A RCD.

Suitable For:



- Public Car Parks
- Shopping Centres
- Bus & Rail Stations
- Restaurants, Hotels etc.
- Workplace

LS4 Accessories

Code	Description	Trade Price
GNM3D-RS485	Three Phase DLM or local Meter 63 Amps	£200.86
DLM300	Three Phase CT DLM Meter 300 Amps	£881.23
DLM600	Three Phase CT DLM Meter 600 Amps	£881.72
MF-LS4	LS4 Foundation support	£192.62
VF-LS4	Ground/ Wall Mounted Pedestal	£90.42

AC Charging - 43KW LS4



For heavy traffic, GARO has invested in creating charging stations with high reliability and compatibility with operators' cloud services and payment systems. For a fossil-free future to become a reality, it is essential for both individuals and companies to make changes. The logistics and transport industry, contracting companies, and other businesses that require many work vehicles are key players in the transition to an electrified vehicle fleet.

Key Features

- Heavy Vehicle Charging
- Simple and intuitive operation
- User identification - RFID reader
- Charger status information
- Optional integration with Back Office (OCPP)
- Built-in communication (4G or LAN)
- Ability to activate DLM (dynamic load management of each socket)
- Personalisation with branding
- Local and remote monitoring and control of devices

Code	Description	Trade Price
LS4MDCMT243FC-MC	MINI 43kw Fixed Cable 7.5m outlets Metered 4G	£7,097.26
LS4DCMT243FC-MC	43kw Fixed Cable 7.5m outlets Metered 4G	£8,085.44

ALIO Payment System



Are you ready to make charging in public easier for all your EV Charging users. Implementing contactless payment on electric vehicle (EV) chargers offers several benefits, contributing to a more convenient and efficient charging experience. The LS4 is now available to order with contactless payment solutions built in.

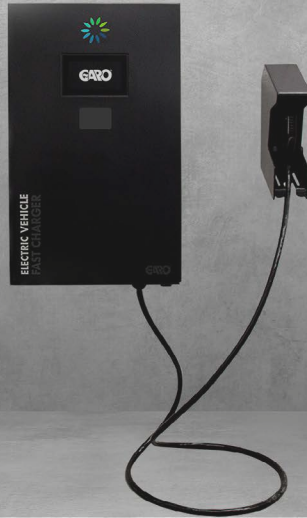
Key Features

- Built-in communication
- Effortless transactions for customers
- PIN and contactless acceptance
- Faster Process
- User-Friendly Interface
- Personalisation with branding
- Transaction tracking and management



For more information or to discuss any project installations please contact our Sales team on ev@garo.co.uk or call us on 0121 3899 444.

DC Charging - ATLE - 24kW



GARO's Atle DC charger offers impressive 24 kW DC power and is versatile enough to be supplied with either CCS or both CCS and CHAdeMO charging Plugs. Its space-saving design and simplified installation process makes it easy to install either on a wall or stand.

Key Features

- Charges EV cars in less than 1 hour (typically)
- One charging output, either CCS Combo or CHAdeMO
- Compact design for fast and economic installation
- Maintenance free cooling system without air filter
- Compatible with all AC networks, 1-Phase & 3-Phase
- Robust design for outdoor use (IP55/IK10)
- Dual Modem for separate operation & maintenance activities
- OCPP 1.6 compliant for Smart Charging
- Front panel & user menu are customisable
- Wall or pedestal mounting



For more information or to discuss any project installations please contact our Sales team on ev@garo.co.uk or call us on 0121 3899 444.

DC Charging - Rapid 60/ 120/ 180



Created to power even the most demanding of vehicles, the RAPID DC charging stations have been designed to comply with the highest quality standards and latest technology. They offer best performance in terms of power management, communications, reliability and efficiency.

The Chargers are compatible with CCS and CHAdeMO standards, with the option of single or dual DC Outlets. Simultaneous charging on both DC outlets is possible, and an optional AC outlet can allow simultaneous charging of up to three vehicles.

Key Features

- Modular electronics
- CCS charging 60kW-120kW-180kW
- Option of dual CCS
- 150 – 1000V DC output
- Auto-retractable cable system
- Optional 22kW AC charging socket
- RGB LED status indicators
- Optional auto resetting RCD's
- Multi-language 7" colour touch-screen
- Option for 21" colour screen (with adverts)
- Simultaneous charging at all available power outlets
- Dynamic Load Management between chargers and grid
- Contactless payment terminal option

For more information or to discuss any project installations please contact our Sales team on ev@garo.co.uk or call us on 0121 3899 444.

EV CHARGING CABLES

Code	Description	Trade Price
CCM32T2T1-5	Type 2 to Type 1 32A 240V 5 Meter EV Charging Cable	£515.67
CCM32T2T2-5	Type 2 to Type 2 32A 240V 5 Meter EV Charging Cable	£479.70
CCM32T2T2-8	Type 2 to Type 2 32A 240V 8 Meter EV Charging Cable	£519.66
CCM32T2T2-10	Type 2 to Type 2 32A 240V 10 Meter EV Charging Cable	£566.32
CCT32T2T2-5	Type 2 to Type 2 32A 400V 5 Meter EV Charging Cable	£519.66
CCT32T2T2-8	Type 2 to Type 2 32A 400V 8 Meter EV Charging Cable	£599.62
CCT32T2T2-10	Type 2 to Type 2 32A 400V 10 Meter EV Charging Cable	£685.95





Terms & Conditions

1. DEFINITIONS

In these terms and conditions, the following words shall have the following meanings: -

'The Company' shall mean Garo Electric Ltd and its successors in Title. 'The Customer' shall mean the person, firm or company offering to purchase goods from the Company and its successors in Title. 'Goods' shall mean the articles and services which are the subject matter of the contract between the Company and the Customer.

2. GENERAL

All business undertaken by the Company is undertaken on the terms and conditions herein contained and any variations will only be binding on the parties hereto if such variation is in writing and signed on behalf of the Company. Any order placed by a customer is deemed to be upon the terms and conditions herein contained.

3. SETTLEMENT TERMS

All items are strictly nett and due for payment 30 days after date of the invoice unless otherwise specified in writing by the Company. The Customer shall not be entitled to make any deductions whether by reason of set-off or for any other reason.

4. PRICES – EXCLUSIVE OF V.A.T.

All quotations are given at current prices but are subject to alterations without notice in accordance with prices ruling at time of delivery. The Company shall be entitled to recover from the Customer by way of addition to prices, such amounts which the Company may become liable to pay in respect of Value Added Tax or other legally imposed Tax in relation to the goods, also currency and other Surcharges will be charged, where applicable, at the rate ruling at date of dispatch.

5. CARRIAGE

The Company normally makes no charge for delivery from its warehouse within the usual van delivery area when delivered by its vehicles but reserves the right to charge carriage on deliveries by whatever means of transport outside such usual delivery areas. Where the goods are specially ordered from manufacturers, the Company reserves the right to pass on any carriage and customs clearance charges as may arise.

6. GUARANTEE

The Company gives no guarantee or warranty whether expressed or implied in relation to the Goods, but the Company shall do everything within its power to protect the Customers interests and to that extent shall assign to the Customer the benefit of such guarantee or warranty (if any) as may be given by the manufacturers in relation to the Goods. The Company does not accept liability for any consequential damage howsoever arising from the purchase by the Customer of the Goods whether the same may arise out of any use of the Goods or the installation of the same.

7. DELIVERY DATES

Whilst the Company shall always do its best to comply with a date quoted for delivery of goods it accepts no responsibility for loss or damage arising from failure to comply.

8. ORDER CANCELLATION

Order Cancellation Bespoke Products and Custom-Made Products. All goods are custom made to order specification. Buyer agrees that an order shall in no event be subject to cancellation or changes and shall be non-refundable, except by prior written consent of the Seller. Orders for these types of goods may not be cancelled / amended by the buyer without payment to Garo in full for the order. Garo shall, in good faith, use commercially reasonable efforts to mitigate the costs of cancellation of any Purchase Order. This order may be cancelled or delayed by the Seller in whole or in part without any liability if due to any cause beyond the control of the Seller. Refunds will be subject to Garo's discretion and conditions of cancellation.

- Standard Products (as featured in the Trade Price List)

Buyer may cancel any order (or any part thereof) for goods by giving Garo written notice of such cancellation at least 15 days prior to the shipping date. In the event of such cancellation, Buyer will have no rights in partially completed goods.

9. RESCHEDULING OF ORDERS

Buyer may at any time, upon not less than thirty (30) days written notice to Garo, reschedule and/or postpone the delivery date relating to an order (or any part thereof) for up to thirty (30) days. The postponement of delivery to a date more than thirty (30) days from the delivery date specified in the initial order shall be deemed a cancellation of such order. BUYER MAY NOT POSTPONE THE DELIVERY DATE MORE THAN ONCE WITH RESPECT TO ANY ORDER. If the Distributor cancels a previously rescheduled delivery of Equipment, the applicable cancellation charges shall be based on the delivery date specified in the initial order submitted by Buyer for such delivery.

10. PACKING AND TRANSIT

Goods received damaged should be signed for as 'Damaged', otherwise claims in this regard cannot be submitted. Customers are asked to note the pre-scribed periods for notification of damage to or shortage and non-delivery of goods and the submission of claims in respect thereof. The Company shall not be liable for any loss resulting from Customers' failure to comply with the requirements of the Railway Executive, Haulage Companies and Post Regulations and the Customer undertakes to indemnify the Company against such loss (if any).

11. ORDERS

Written confirmation of telephone orders should be clearly marked as such, otherwise the Company cannot be responsible should the order be duplicated. The Company reserves the right to refuse any order placed, or to refuse cancellation of any order, or to suspend delivery of any order from time to time, if the account is in arrears.

12. WAIVER

A waiver by the Company at any term or condition shall not constitute a general waiver of such term or condition.

13. OWNERSHIP

(a) The property in the goods shall not be deemed to have passed to the Customer until the goods and any debts owing to the Company whether arising from this contract or otherwise have been paid for and discharged in full.

(b) In the meantime, the goods shall remain the sole property of the Company and the Customer shall be bailee thereof.

(c) If the Customer fails to pay any sums due in accordance with the terms of this agreement the Company may after giving seven days' notice in writing to the Customer take possession of the goods and may for that purpose, by himself his servants or agents, enter upon any land or premises on or in which the goods or any part of them are believed by the Company to be situated.

(d) The Customer agrees not to sell, assign, sub-let or otherwise part with the possession of the goods until the property in the goods passes to the Customer in accordance with the provisions of paragraphs (a) and (b)

(e) The risk of any loss or damage to or deterioration of the goods from whatever cause shall be borne by the Customer from when the Customer, his servants, licensees or agents receive possession of the goods

(f) If payment is overdue and not discharged, the Company may without prejudice to any of its rights and remedies and with due warning to the Customer by registered mail, recover and resell any or all such goods and may enter upon the Customer's premises for that purpose. Recovery costs will become the liability of the Customer and shall include all labour, tools, plant hire and all other relevant charges-costs.

14. RETURNS

(a) Goods correctly supplied may not be returned without the Company's agreement in writing. Goods so returned must be consigned Carriage Paid and accompanied by a Packing Note stating the Company's Delivery Note Number. The Company reserves the right to make a re-stocking charge. Goods will be accepted only if returned in perfect condition and in unopened and perfect packaging. A clear and authorised signature must be obtained from the Company.

(b) GARO branded products (EEE) can be returned to GARO, carriage paid, or WEEE recycling, subject to national directives.

(a) Any claim relating to goods delivered under this contract shall be notified to the Company in writing within seven (7) days from the date on which the said goods are received by the Customer or his agent and the Customer



shall afford the Company reasonable facilities for examining the goods before they have been disposed of, or in any way altered. All goods damaged in transit and accepted in that condition by the Customer shall not be the subject of any claim hereunder.

(b) Any claim or claims in respect of goods delivered under this contract shall not be grounds for withholding payment of accounts and shall not give any right of set-off against payment due to the Company.

(c) No claim for damages to or shortages of goods during transit will be considered unless the Company and the carriers are advised in writing within seven (7) days of delivery of goods and no claim for non-delivery will be considered unless the Company and the carriers are advised within ten (10) days from date of dispatch of goods.

14.1 STANDARD TERMS

1. All goods returned to GARO must be approved by GARO. A returns number issued by GARO must be noted on any return documentation. Product returns without a valid returns number will be rejected and returned at the buyer's expense.

2. A returns number can be obtained by emailing returns@garo.co.uk or by contacting the main office.

3. For returns accepted by Garo, the buyer will be liable for the return cost and risk of damage/loss of the goods.

4. Goods which the customer considers to be faulty can be returned subject to 1.

a) These products will be individually tested. If the product is found to be faulty, the customer will be informed, and a credit note will be issued.

b) No credit will be issued for products found not to be faulty, and the products will be made available for collection by the customer.

c) Goods will only be stored for 30 days after the customer has been informed.

5. Garo reserve the right to reject a claim within 28 days if no fault is found.

6. Garo will not incur any costs for installing or fitting replacement products.

7. All returns must include a copy of the Garo returns document and the returns number clearly stated on the package. Garo will reject returns without this information.

14.2 DAMAGED ITEMS

1. For items received damaged, the buyer must contact Garo within 24 hours of the goods being received. Evidence of the damage must be provided, along with all delivery documentation. A replacement product will be provided if satisfactory evidence is supplied.

2. In the case of quantity discrepancies, Garo must be informed within 24 hours of receiving the goods. Garo will then investigate after receiving delivery documentation from the buyer. If found to be correct –

a) The missing items will be sent (at Garo's cost) to the buyer.

b) For over-deliveries, an invoice will need to be raised, or Garo will arrange for the collection of the goods.

3. If an incorrect item is received, Garo will arrange for the collection and replacement product to be delivered. All evidence must be sent to Garo within 24 hours of delivery.

14.3 STOCK CLEANSE

1. Product returns as part of a stock cleanse will be subject to a re-stocking charge or an order in lieu. This must be agreed before any stock return. The products returned must be in perfect condition. This applies to the product and packaging. EV chargers & assembled products are excluded from any stock cleanse. Products older than 6 months are not eligible for stock cleanse.

2. Stock cleanse must be requested in writing to the area sales rep. If this has not been approved, the return will be rejected.

3. For returns accepted by Garo, the buyer will pay for the return cost and risk of damage/loss of the goods.

14.4 WEE

General Products UK 2023

1. GARO branded products (EEE) can be returned to GARO, carriage paid, for WEEE recycling, subject to national directives.

15. CHOICE OF LAW

These conditions and the contract shall be subject to and construed in accordance with the laws of England and Wales. The Customer submits to the jurisdiction of the Courts of England and Wales.



WE SIMPLIFY, INNOVATE, ELEVATE



GARO ELECTRIC LTD
UNIT 16 URBAN EXPRESS PARK
ASTON HALL ROAD
BIRMINGHAM
B67FH

TEL: 0121 3899 444
SALES@GARO.CO.UK
WWW.GARO.CO.UK
WWW.GAROELECTRIC.COM

